

Suffolk University

Digital Collections @ Suffolk

College of Arts and Sciences and Sawyer
Business School Academic Catalogs

Suffolk University Academic Catalogs

1979

Suffolk University Academic Catalog, College Departments-- supplement, 1979-1980

Suffolk University

Follow this and additional works at: <https://dc.suffolk.edu/cassbs-catalogs>

Recommended Citation

Suffolk University, "Suffolk University Academic Catalog, College Departments--supplement, 1979-1980" (1979). *College of Arts and Sciences and Sawyer Business School Academic Catalogs*. 58.
<https://dc.suffolk.edu/cassbs-catalogs/58>

This Book is brought to you for free and open access by the Suffolk University Academic Catalogs at Digital Collections @ Suffolk. It has been accepted for inclusion in College of Arts and Sciences and Sawyer Business School Academic Catalogs by an authorized administrator of Digital Collections @ Suffolk. For more information, please contact dct@suffolk.edu.

SUFFOLK UNIVERSITY BULLETIN

College of Liberal Arts and Sciences



1979-1980

This supplement supercedes the information
printed inside the main Bulletin.

1979-80 Supplement to the Suffolk University Bulletin

BOARD OF TRUSTEES

Vincent A. Fulmer, *Chairman*
Jeanne M. Hession, *Vice Chairperson*
Francis X. Flannery, *Treasurer*
John Griffin, *Clerk*

LIFE TRUSTEES

Hon. Frank J. Donahue, *Retired Justice, Massachusetts Superior Court, Boston, MA*
John Griffin, *President, Virginia Investment Company, Boston, MA*
Hon. Lawrence L. Cameron, *Justice, South Boston District Court, South Boston, MA*
Hon. C. Edward Rowe, *Retired Justice, District Court of East Franklin, Orange, MA*
Jeanne M. Hession, *Senior Trust Officer and Associate Counsel, Boston Safe Deposit and Trust, Boston, MA*

TRUSTEES

Joseph A. Caulfield, Esq., *Caulfield, Harrigan & Murray, Boston, MA (1979)*
Joseph P. Graham, Esq., *Lee and Graham, Boston, MA (1979)*
Hon. Walter H. McLaughlin, *Retired Chief Justice, Massachusetts Superior Court, Boston, MA (1979)*
Dorothy A. Antonelli, *Commissioner, Industrial Accident Board, Boston, MA (1980)*
John S. Howe, *Retired Chairman and Chief Executive Officer, the Provident Institution for Savings, Boston, MA (1980)*
Michael L. Linquta, *Seven Seas Wharf, Gloucester, MA (1980)*
Joseph B. Shanahan, Jr., Esq., *Attorney at Law, Chelmsford, MA (1980)*
John P. Chase, *Chairman of the Board, Phoenix Investment Counsel of Boston, Inc. Boston, MA (1981)*
Thomas A. Fulham, *President, Suffolk University, Boston, MA (1981)*
Paul T. Smith, Esq., *Attorney at Law, Boston, MA (1981)*
Harry Zohn, *Professor of German, Brandeis University, Waltham, MA (1981)*
Hon. John F. Collins, *Attorney at Law, Boston, MA (1982)*
Vincent A. Fulmer, *Secretary of the Institute, M.I.T. Corporation, Cambridge, MA (1982)*
Herbert C. Hambelton, *Headmaster, Boston Business School, Boston, MA (1982)*
Francis X. Flannery, *Vice President and Treasurer, Suffolk University, Boston, MA (1983)*
James F. Linnehan, Esq., *Attorney at Law, Boston, MA (1983)*

TRUSTEES EMERITI

Rexford A. Bristol, *Chairman, Finance Committee, The Foxboro Company, Foxboro, MA*

Nelson G. Burke, *Retired President and Treasurer, Pennsylvania Petroleum Products Company, Providence, RI*

Stephen P. Mugar, *Honorary Chairman of the Board, Star Market Company, Cambridge, MA*

George B. Rowell, Esq., *Warner, Stackpole, Stetson & Bradlee, Boston, MA*

Joseph Schneider, Esq., *Attorney at Law, Boston, MA*

George C. Seybolt, *Chairman of the Board and Chief Executive Officer, Wm. Underwood Company, Westwood, MA*

ACADEMIC ADMINISTRATION

President

Thomas A. Fulham, A.B., D.C.S.

Vice President and Treasurer

Francis X. Flannery, B.S. in B.A., M.S. in B.A., C.P.A.

College of Liberal Arts and Sciences:

Michael R. Ronayne, Jr., B.S., Ph.D., Dean

Joseph H. Strain, A.B., A.M., C.A.S., Ed.D., Associate Dean

Peter C. Sartwell, B.A., Ed.D., Assistant Dean

College of Business Administration and Graduate School of Administration

Richard L. McDowell, S.B., S.M., Ph.D., Dean

Ronald Sundberg, B.S., M.A., Assistant Dean

Suffolk University Law School

David J. Sargent, J.D., LL.D., Dean

Malcolm J. Donahue, A.B., J.D., Associate Dean

Herbert Lemelman, J.D., LL.M., Associate Dean

College Library

Edmund G. Hamann, B.A., M.A., M.A.L.S., College Librarian

James R. Coleman, B.A., M.A., M.L.S., Assistant College Librarian and Reference Librarian

Catherine Axon, A.B., M.S.L.S., Reference Librarian

Ruth E. Winn, B.A., M.A., M.S.L.S., Technical Services Librarian

Timothea F. McDonald, B.A., M.A.L.S., Reference Librarian

Media Technology

Donald F. Mikes, A.B., M.A., Director

BUSINESS AND FINANCIAL ADMINISTRATION

Treasurer's Office

Francis X. Flannery, B.S.B.A., M.S. in B.A., C.P.A., *Vice President and Treasurer*

Paul J. Ryan, B.S., M.B.A., *Business Manager*

Michael F. Dwyer, B.S.B.A., M.B.A., *Comptroller*

Alice A. De Rosa, *Payroll and Group Benefits Advisor*

Personnel Office

Karen E. Hickey, B.S., *Director of Personnel and Equal Employment Opportunity*

Data Processing Office

Paul F. Ladd, B.S.B.A., *Director of Data Processing*

Robert D. DiGuardia, *Chief Programmer/Analyst*

Physical Plant

Ivan Banks, *Director*

Edward Farren, Jr., A.S., *Assistant Director*

Michael G. Roper, B.S., M.P.A., *Night Supervisor*

Security

Edward Farren, Jr., A.S., *Chief*

University Archives

P. Richard Jones, B.S. in J., M.Ed., *Director of Archives*

Bookstore

Stephen Peters, *Manager, Law Division*

Louis Peters, *Manager, College Division*

STUDENT PERSONNEL SERVICES

Dean of Students' Office

D. Bradley Sullivan, B.S., M.B.A., Ed.D., *Dean of Students*

Charles L. Niles, B.S., *Senior Citizen Program Advisor*

Admissions Office

William F. Coughlin, A.B., M.Ed., *Director of Admissions*

Nancy J. Fine, A.B., M.Ed., *Transfer Student Counselor*

Martha Holmes-Barrett, B.A., M.Ed., *Admissions Counselor*

Registrar's Office

Mary A. Hefron, A.B., M.A. in Ed., *Registrar*

Joan Monahan, B.A., *Assistant Registrar*

University Counseling Services

Kenneth F. Garni, A.B., Ed.M., Ed.D., *Chairperson*

Reading Services

Mary M. Mahoney, B.A., M.Ed., Ed.D., *Director of Develpmental and Remedial Reading*

Student Activities Office

Sheila O'Rourke, B.A., M.Ed., *Assistant Director*

Athletics Office

James E. Nelson, B.S. in B.A., M.Ed., *Director*

Thomas A. Walsh, B.S., M.Ed., *Assistant to the Director*

Ann Guilbert, B.S., M.S., *Assistant to the Director: Women's Programs*

Financial Aid Director

Edwinia Middleton, B.S., M.Ed., *Director*

Darcie Lincoln, B.A., *Assistant Director*

James J. Mallozzi, B.S. in B.A., *Student Information Officer*

Chris Perry, B.A., M.Ed., *Job Development Officer*

Placement Office

Michael H. Rubino, B.A., M.Ed., *Director of Career Planning and Placement*

Cosmo T. Stefaney, B.S., M.Ed., *Educational Placement Liaison Officer*

Health Services

C.J.E. Kickham, M.D., *University Physician*

Mary E. Gibbons, R.N., *University Nurse*

Frances O'Leary, R.N., *Evening Division Nurse*

Foreign Student Office

Vahe A. Sarafian, A.B., A.M., Ph.D., *Foreign Student Advisor*

Campus Ministry

Carol Robb, B.A., M.A., Ph.D., *Campus Minister*

Rev. Daniel McLellan, O.F.M., *Campus Minister*

Rev. Paul J. Lynch, *Campus Minister*

Nancy B. Coonen

DEVELOPMENT, ALUMNI, AND PUBLIC RELATIONS

University Development

Frank Whitson, B.S., M.S., *Director*

William C. Amidon, A.B., M.A., *Assistant Director*

Ellen Peterson, A.B., Ed.M., *Director of Alumni Activities*

Public Relations

Louis B. Connelly, B.S. in J., M.Ed., *Director*

SECRETARIES TO THE ADMINISTRATIVE OFFICERS

Marjorie C. Kelleher, B.A., M.Ed., *Executive Secretary to the President, Chairman of the Board*

Dolly Madden Hunter, A.A., *Secretary to the President*

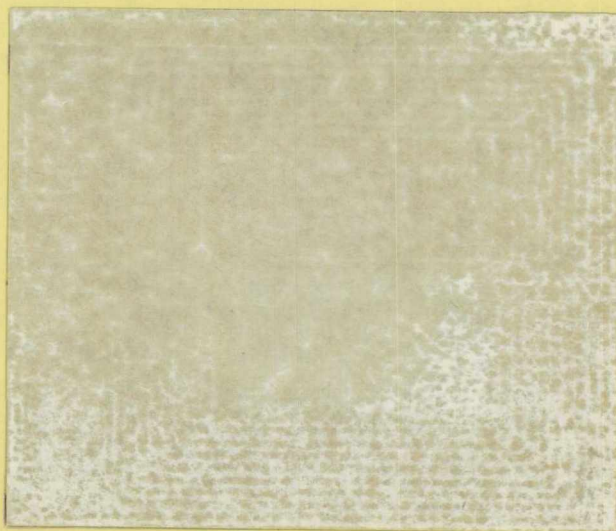
Maureen Dooley, A.S., *Executive Secretary to the Vice President and Treasurer*

Nancy Bliss, A.A., B.S., *Administrative Secretary to the Dean of the College of Liberal Arts and Sciences*

Theresa O'Neill, Administrative Secretary to the Dean of the College of Business Administration

Sherry A. Moulton, A.S., *Administrative Secretary to the Associate Dean of the College of Liberal Arts and Sciences*

Mary F. Fraser, Administrative Secretary to the Dean of Students



SUFFOLK UNIVERSITY COLLEGE FACULTY 1979-1980

EMERITI

Dion J. Archon, *Emeritus Professor of Government and Economics*. A.B., A.M., Ph.D., Harvard.

Ilse M. Fang, *Emerita Professor of German*. Ph.D., Berlin (Germany).

Charles H. Farley, *Emeritus Associate Professor of History*. A.B., Bowdoin; A.M., Harvard.

Catherine Fehrer, *Emerita Professor of Romance Languages*. A.B., Vassar; A.M., Ph.D., Bryn Mawr.

Norman B. Floyd, *Emeritus Professor of History*. A.B., Amherst; A.M., Ph.D., Harvard.

Donald W. Goodrich, *Emeritus Dean*. A.B., Williams; A.M., Harvard; Litt.D., Emerson; D. Hum. (Hon.), Suffolk.

Edward G. Hartmann, *Emeritus Professor of History*. A.B., A.M., Bucknell; B.S. in L.S., Ph.D., Columbia.

Charles Law, *Emeritus Associate Professor of Physical Education*. B.S., Springfield; Ed.M., Boston University.

Leo Lieberman, *Emeritus Professor of Psychological Services*. A.B., Ed.M., Ed.D., Harvard.

Florence R. Petherick, *Emerita Professor of Humanities*. A.B., Calvin Coolidge; A.M., Ph.D., Boston University.

Richard J. Sullivan, *Emeritus Professor of Administration*. A.B., Dartmouth; M.S., Simmons School of Library Science.

FULL-TIME FACULTY

Barbara F. Ash, *Assistant Professor of Education and Director of Programs in Business Education*. A.S., Vermont College; B.S., M.Ed., Boston University.

Agnes S. Bain, *Assistant Professor of Government*. B.A., McGill University; Ph.D., Boston University.

Malcolm J. Barach, *Chairman and Associate Professor of Journalism*. B.A., Long Island University; M.F.A., Columbia University.

John C. Berg, *Assistant Professor of Government*. B.A., University of Wisconsin; M.A., Ph.D., Harvard University.

Blair F. Bigelow, *Professor of English*. A.B., Harvard; M.A., Ph.D., Brandeis.

Maria Migliorini Bonaventura, *Chairman and Professor of Chemistry*. A.B., Regis College; Ph.D., Tufts University.

***Cleophas W. Boudreau**, *Chairman and Professor of Humanities and Languages*. A.B., Boston University; M.A., University of Rochester; Ph.D., Johns Hopkins University.

Ann E. Boutelle, *Associate Professor of English*. B.A., St. Andrews University; M.A., Ph.D., New York University.

Richard Thomas Bray, *Associate Professor of Journalism*. B.S., Fordham; M.A., St. John's University; Ph.D., University of Wisconsin.

William J. Buckingham, *Associate Professor of Mathematics*. B.S., Stanford; M.A., Princeton.

Joanne Carr, *Assistant Professor of Education and Director of Special Education*. B.A., University of Florida; M.A., University of South Florida; Ph.D., University of Georgia.

Gary P. Castanino, *Assistant Professor of Sociology*. A.B., Suffolk University; M.A., University of Maine.

John C. Cavanagh, *Chairman and Professor of History*. B.A., Dartmouth College; M.A., Columbia University; Ph.D., Duke University.

Arthur P. Chaisson, *Associate Professor of French*. A.B., Brandeis University; M.A., Ph.D., Tufts University.

H. Edward Clark, *Professor of English*. A.B., Miami (Ohio); Ph.D., Indiana.

Donald L. Cohn, *Associate Professor of Mathematics*. A.B., Oberlin College; M.A., Ph.D., Harvard University.

John V. Colburn, *Associate Professor of English*. B.S. in Ed., A.M., Boston University; J.D., Suffolk.

Thomas E. Connors, *Professor of English*. A.B., Brandeis; M.A., Boston University.

William F. Coughlin, *Professor of Administration and Director of Admissions*. A.B., Holy Cross; Ed.M., Boston University.

Betty DeGuglielmo, *Assistant Professor of Psychological Services*. B.S., University of Tulsa; M.S., Ed.D., Oklahoma State University.

David A. Dorwart, *Instructor in Communications and Speech and Director of the Suffolk Theatre Company*. A.B., Amherst College; M.F.A., Smith College.

Judith Rasmussen Dushku, *Assistant Professor of Government*. A.B., Brigham Young University; M.A., M.A.L.D., Fletcher School of Law and Diplomacy.

Judith H. Elmusa, *Chairman and Associate Professor of Government and Economics*. B.A., University of Colorado; M.Sc., London School of Economics; Ph.D., Harvard University.

Glen A. Eskedal, *Professor of Education and Director of Programs in Counselor Education*. B.S., King's College (New York); M.A., Michigan State University; Ed.D., Boston University.

Paul Ezust, *Chairman and Professor of Mathematics*. B.S., Widener College; M.A., Ph.D., Tufts University.

Frank A. Feldman, *Associate Professor of Physics*. B.A., Harvard; M.A., Ph.D., Boston University.

James Fiore, *Associate Professor of Biology*. B.A., State University of New York at Binghamton; M.A., Ph.D., Duke University.

D. Donald Fiorillo, *Chairman and Professor of Sociology*. A.B., Clark University; M.A., Boston College; D.Hum. (Hon.), Suffolk University.

Kenneth F. Garni, *Chairman and Professor of Psychological Services*. A.B., Amherst College; Ed.M., Ed.D., Boston University.

Murray Golub, *Adjunct Professor of Chemistry*. B.S., Brooklyn College; M.S., Adelphi University.

William E. Good, Jr., *Professor of Chemistry*. B.A., Kalamazoo College; Ph.D., Massachusetts Institute of Technology.

Kenneth S. Greenberg, *Assistant Professor of History*. B.A., Cornell University; M.A., Columbia University; Ph.D., University of Wisconsin.

Jack P. Hajj, *Associate Professor of Mathematics*. B.Sc., American University of Beirut; Ph.D., Tufts University.

Edmund G. Hamann, *Associate Professor of Administration and College Librarian*. B.A., Hamilton College; M.A., M.A.L.S., University of Michigan.

William L. Hannah, *Associate Professor of Psychology*. C.D.T., Brooks Army Medical School; B.S., Ed.M., Suffolk University; C.A.E.S., Ed.D., Boston College.

Edward J. Harris, Jr., *Chairman and Assistant Professor in Communications and Speech*. B.A., SUNY-Plattsburgh; M.A., Ph.D., Penn State University.

Marshall D. Hastings, *Associate Professor of French*. A.B., Tufts; A.M.T., Harvard; Ph.D., Stanford.

Mary A. Hebron, *Assistant Professor of Administration and Registrar*. A.B., Regis; M.A. in Ed., Suffolk University.

Robert Johnston Howe, *Assistant Professor of Biology*. B.S., M.S., University of Rhode Island; Ph.D., Northern Arizona University.

Ann D. Hughes, *Assistant Professor of English*. B.A., Concordia; M.A., University of Kansas.

Robert B. Jennings, *Assistant Professor of Education and Director of Programs in Secondary Education and Foundations of Education*. B.S., Fitchburg State College; M.Ed., Springfield College; D.Ed., Boston College.

***Eileen H. Jokinen**, *Associate Professor of Biology*. B.S., Ph.D., Wayne State University.

Robert K. Johnson, *Professor of English*. A.B., Hofstra; M.A., Cornell; Ph.D., Denver.

Walter H. Johnson, Jr., *Chairman and Professor of Physics*. B.A., Rice; M.A., Ph.D., Harvard.

***Marilyn Jurich**, *Assistant Professor of English*. A.B., Hunter; M.A., Northwestern.

Harvey A. Katz, *Associate Professor of Psychology*. B.A., Queens College (New York); M.A., Ph.D., University of Connecticut.

Paul Korn, *Associate Professor of Psychological Services*. A.B., University of Rochester; M.A., Ph.D., University of Connecticut.

Hayes C. Lamont, *Associate Professor of Biology*. B.A., Amherst; Ph.D., Harvard.

Cynthia M. Latta, *Associate Professor of Economics*. B.A., Knox College; M.Ph., Ph.D., Columbia University.

Pedro P. Ledesma de los Reyes, *Assistant Professor of Spanish*. B.S., M.A., Ph.D., Columbia University.

Jehudah H. Leftin, *Associate Professor of Chemistry*. A.B., A.M., Boston University; Ph.D., Weizmann Institute of Science.

Glen A. Lewandowski, *Professor of Education and Director of Programs in Reading Specialization*. B.A., M.Ed., Ph.D., University of Oklahoma.

Doris Ingram Lewis, *Assistant Professor of Chemistry*. B.S., Duke University; Ph.D., Tufts University.

Margaret A. Lloyd, *Professor of Psychology*. B.A., University of Denver; M.S., Indiana University; M.A., Ph.D., University of Arizona.

Ruth S. Lottridge, *Assistant Professor of English*. A.B., Reed; M.A., Radcliffe.

Phyllis Mack, *Assistant Professor of Sociology*. B.S., Simmons; M.A.T., Harvard.

Joan MacVicar, *Associate Professor of Psychological Services*. B.A., Barrington College; M.A., Ph.D., Boston University.

Mary M. Mahoney, *Associate Professor and Director of Developmental Reading*. B.A., Emmanuel; M.Ed., Salem State College; Ed.D., Boston University.

Sheila M. Mahoney, *Associate Professor of Education and Director of Programs in Early Childhood Education and Elementary Education*. B.S. in Ed., Wheelock College; Ed.M., Harvard University; Ed.D., Columbia University.

Frederick J. Marchant, *Instructor of English*. A.B., Brown; M.A., University of Chicago.

Theodore Marshall, *Professor of Physics*. B.S., Illinois Institute of Technology; Ph.D., Catholic University of America.

Joseph M. McCarthy, *Associate Professor of Education and Director of Programs in Administration and Supervision*. A.B., St. John's Seminary; A.M., Ph.D., Boston College.

Juan Alberto Mendez-Herrera, *Associate Professor of Spanish*. Professor de Educacion Primaria, Escuela Normal of Chile; Profesor de Castellano, University of Chile; M.A., University of Texas; Ph.D., Harvard University.

Anthony G. Merzlak, *Associate Professor of English*. B.A., University of Southern California; M.A., Ph.D., Harvard University.

Stuart A. Millner, *Professor of English*. A.B., Boston University, A.M., Ph.D., Brandeis.

Tanju T. Mishara, *Assistant Professor of Education*. B.A., Michigan State University; M.A., Ph.D., University of Maine.

Donald R. Morton, *Assistant Professor of Sociology*. B.A., University of Portland; M.A., University of Toledo; Ph.D., University of Notre Dame.

Philip F. Mulvey, Jr., *Professor of Biology and Environmental Technology Program Coordinator*. A.B., Clark; M.A., Bowling Green State University; Ph.D., Buffalo; J.D., Suffolk University.

Eric R. Myrvaagnes, *Associate Professor of Mathematics*. B.A., Harvard; M.A., Ph.D., Tufts.

James Nelson, *Assistant Professor and Director of Physical Education*. B.S. in B.A., Boston College; M.Ed., State College at Boston.

John J. O'Callaghan, *Assistant Professor of Government*. A.B., J.D., Suffolk University; LL.M., Boston University.

Dennis Outwater, *Associate Professor of Philosophy*. A.B., University of California at Berkeley; B.D., M.A., Ph.D., University of Chicago.

Raymond H. Parks, *Assistant Professor of Humanities*. Diploma, School of the Museum of Fine Arts.

Steven Patterson, *Associate Professor of Chemistry*. B.S., University of Illinois; Ph.D., Massachusetts Institute of Technology.

Philip D. Pearl, *Chairman and Professor of Philosophy*. B.A., Russell Sage College; M.A., New York University; Ph.D., New School for Social Research.

Richard P. Preiss, *Instructor in Journalism*. B.A., M.A., Ph.D., Syracuse University.

Margaret W. Raben, *Professor of Psychology*. B.A., Smith College; M.A., Ph.D., Columbia University.

Martha E. Richmond, *Associate Professor of Chemistry*. A.B., Wellesley College; Ph.D., Tufts University.

David L. Robbins, *Associate Professor of History*. A.B., Colgate University; M.Phil., Ph.D., Yale University.

Michael R. Ronayne, Jr., *Professor of Chemistry, Dean, College of Liberal Arts and Sciences*. B.S., Boston College; Ph.D., University of Notre Dame.

William S. Sahakian, *Professor of Philosophy, and Professor of Psychology*. B.S., Northeastern University; S.T.B., Ph.D., Boston University; D.Sc., (Hon.) Curry College.

Vahe A. Sarafian, *Professor of History*. A.B., Harvard; A.M., Ph.D., Boston University.

Peter Sartwell, *Assistant Professor of Education, and Assistant Dean, College of Liberal Arts and Sciences*. A.B., University of Maryland; Ed.D., University of Massachusetts.

Saroj Sawhney, *Assistant Professor of Economics*. B.A., M.A., Delhi University, India; M.A., Ph.D., Northeastern University.

John C. Shannon, *Associate Professor of Economics*. B.S., M.A., Boston College.

Stephen Shatkin, *Associate Professor of Education*. A.B., Harvard; M.A.T., Brown University; Ph.D., Ohio State University.

Beatrice L. Snow, *Professor of Biology; Medical Technology Program Coordinator*. A.B., Suffolk; M.S., Ph.D., University of New Hampshire.

Cosmo T. Stefaney, *Assistant Professor of Education; Educational Placement Officer; and Director of Student Teaching*. B.S., Salem State College; M.Ed., Boston University.

Joseph H. Strain, *Professor of Educational Administration and Speech, Associate Dean, College of Liberal Arts and Sciences*. A.B., Suffolk; A.M., Boston College; C.A.S., Ed.D., Harvard.

D. Bradley Sullivan, *Professor of Administration and Dean of Students*. B.S., Boston State College; M.B.A., Northeastern; Ed.D., Boston College.

John L. Sullivan, *Professor of Sociology*. A.B., M.A., Ph.D., Boston College.

Robert J. Topitzer, *Associate Professor of Sociology*. B.S., Holy Cross; M.A., Northeastern; Ph.D., University of New Hampshire.

Donald M. Unger, *Chairman and Professor of Education*. A.B., Dartmouth; A.M.T., Ed.D., Harvard.

Stanley M. Vogel, *Professor of English*. A.B., New York University; A.M., Ph.D., Yale.

Robert C. Webb, *Chairman and Professor of Psychology*. A.B., Middlebury; M.A., Brown; Ph.D., Tufts.

Dorothy C. Wertz, *Associate Professor of Sociology*. A.B., Radcliffe; A.M., Ph.D., Harvard University.

Arthur J. West II, *Chairman, Professor of Biology, and Director, Robert S. Friedman Cobscook Bay Laboratory*. B.S., M.A. in Ed., Suffolk University; M.S., Ph.D., University of New Hampshire.

Malcolm E. Wetherbee, *Professor of Psychology*. B.S., Gordon; B.D., Harvard; M.A., Ph.D., Boston University.

Frederick C. Wilkins, *Chairman and Professor of English*. B.A., Bowdoin College; M.A., Ph.D., University of Iowa.

Elizabeth S. Williams, *Associate Professor of Psychology*. A.B., Adelphi; Ed.M., C.A.S., Harvard.

R. Arthur Winters, *Associate Professor of Education*. A.B., M.A., Rutgers University; M.Ed., Ph.D., University of New York at Buffalo.

Michael J. Zifcak, *Assistant Professor of Education*. A.B., Brown University; M.Ed., Rhode Island College; Ph.D., University of Connecticut.

Rudolf Zuckerstatter, *Professor of Philosophy*. M.A., University of Massachusetts; Ph.D., Harvard.

PART-TIME FACULTY

Richard Adams, *Lecturer in Education*. B.A., Ed.M., Harvard.

Dion J. Archon, *Senior Lecturer in Government and Economics*. A.B., A.M., Ph.D., Harvard.

Joanne A. Arnaud, *Lecturer in Government*. B.A., Wellesley; Ph.D., Brown University.

Kenneth J. Ayube, *Lecturer in Physics*. B.S., M.S., Northeastern University.

Marshall B. Barker, *Lecturer in Education*. B.S., University of New Hampshire; M.Ed., Boston University; M.S.T., Colby College; C.A.G.S., Boston University.

Thomas F. Brownell, *Senior Lecturer in Government*. B.S., J.D., Suffolk University; LL.M., Boston University Law School.

Anthony J. Burke, *Lecturer in Government*. B.S., Boston University; M.P.A., Suffolk University.

Vincent P. Cahalane, *Lecturer in Education*. A.B., Boston College; J.D., Suffolk University.

Bradford S. Chase, *Lecturer in Education*. A.E., Wentworth Institute; B.S., Ed., M.Ed., Northeastern University; Ph.D., University of Wyoming.

Jerome Chermak, *Lecturer in Education*. B.A., Harpur College (SUNY); M.A.T., State University of New York (Binghamton).

Gerald F. Comeau, *Lecturer in Marine Science*.

Susan M. Copell, *Lecturer in Education*. B.S., Merrimack College; Ed.M., Boston University.

James C. Cornell, Jr., *Lecturer in Journalism*. B.A., Hamilton College; M.S., Boston University.

Leo P. Dauwer, *Lecturer in Education*. B.A., Boston University; M.Ed., Boston College; C.A.G.S., Northeastern University.

Robert S. DeJulio, *Lecturer in Education*. B.S., Ed.M., Boston College; Ed.D., Boston University.

Orlando Del Valle, *Lecturer in Sociology*. B.A., Alfred University.

Charles P. Deninger, *Lecturer in Humanities*. B.S., Suffolk University; M.A., Boston University.

Haig Der Marderosian, *Lecturer in Communications and Speech*. B.L.I., M.S., Emerson College.

Edward J. Dever, Jr., *Senior Lecturer in Government*. A.B., Williams; J.D., Boston College.

Antonette DiLoretto, *Lecturer in Education*. A.B. in C.Ed., Bryant College; M.Ed., Rhode Island College; Ed.D., Boston University.

Bayne W. Drown, *Lecturer in Education*. B.S., University of Maine; Ed.M., Boston University.

Kevin P. Duffy, *Lecturer in Education*. B.A., Cathedral College; M.S., Fordham University.

Leonora A. Esposito, *Lecturer in Communications and Speech*. A.A., Clinton Community College; B.A., State University College at Plattsburgh; M.S., Emerson College.

E. Belle Evans, *Lecturer in Education*. B.S., (Nursing), B.S. (Ed.), Boston University; M.Ed., Tufts University; M.P.H. Yale University; M.S.W., Ph.D., Brandeis University.

Edwin R. Feintech, *Lecturer in Education*. B.S., University of Iowa; Ph.D., University of Nebraska.

Marguerite Flavin, *Lecturer in Education*. B.A., Regis College; M.Ed., Boston University.

Louis P. Foglia, *Lecturer in Economics*. B.S., M.A., Northeastern University.

Robert Frankel, *Lecturer in Mathematics*. B.A., Harvard University; Ph.D., University of Wisconsin.

William R. Gennert, *Senior Lecturer in Sociology*. B.A., Yale; M.S., Northeastern University.

Roberta Gianfortoni, *Lecturer in Sociology*. B.A., State University of New York; M.A., University of Wisconsin-Milwaukee.

Michael R. Gness, *Lecturer in Sociology*. A.B., Suffolk; M.S., University of Massachusetts.

Benjamin H. Golini, *Lecturer in Education*. B.S. in Ed., Ed.M., Boston University.

Ernest A. Greco, *Lecturer in Government*. B.A., University of Illinois.

Christopher Harding, *Lecturer in English*. B.A., Yale University; M.A., Ph.D., Harvard University.

John Hinckley, Jr., *Lecturer in Sociology*. B.S., Suffolk University.

William F. Homer, *Senior Lecturer in Journalism*. A.B., M.B.A., Harvard.

Albert Hurwitz, *Lecturer in Education*. B.S., A.M., George Peabody College; M.F.A., Yale University; Ed.D., Pennsylvania State University.

William E. Jenner, *Lecturer in Mathematics*. B.A., Queen's University; M.A., University of Toronto; Ph.D., University of Michigan.

Patrick J. Johnson, *Lecturer in Physics*. B.A., San Francisco State University; M.A., University of California.

Farhoud Kafi-Tehrani, *Lecturer in Economics*. A.B., California State College; M.A., M.S., Northeastern University.

William D. Kearns, *Lecturer in Education*. A.B., St. John's Seminary; M.Ed., Boston State College.

Raymond H. Kelton, Jr., *Lecturer in Humanities*. B.S., University of Nebraska; M.Mus., New England Conservatory of Music; Ph.D., Boston University.

Barbara H. Krysiak, *Lecturer in Education*. B.S., Lowell State College; M.Ed., Boston University; C.A.G.S., Northeastern University.

Cynthia W. Lawton, *Lecturer in Communications and Speech*. B.A., Emerson College; M.A., Hunter College.

Carole B. Levin, *Lecturer in History*. B.A., Southern Illinois University; M.A., Ph.D., Tufts University.

Walter A. Littlefield, *Lecturer in Communications and Speech*. B.A., M.A., Michigan State University.

Eleanor J. Lopez, *Lecturer in Communications and Speech*. B.S., Northwestern University; M.A., Emerson College.

Kevin M. Lyons, *Lecturer in Education*. B.A., University of Massachusetts (Amherst); M.Ed., University of Lowell.

Arch Macdonald, *Senior Lecturer in Journalism*. Ph.B., Providence College.

Bette Mandl, *Lecturer in English*. B.A., Brooklyn College; M.A., New York University.

James L. Martin, *Lecturer in English*. B.A., Colby College; Ph.M., Boston University.

John R. Martuccelli, *Senior Lecturer in Mathematics*. B.S., M.S., Massachusetts Institute of Technology.

Kathleen M. Massaro, *Lecturer in Economics*. B.A., State University of New York (Binghamton); M.A., University of Missouri.

Edward D. McClure, *Lecturer in Sociology*. B.S., M.A. in Ed., Suffolk University; M.S.W., University of Denver.

J. Bruce McKenna, *Lecturer in Education*. B.S., M.Ed., Springfield College; Ed.D., Boston University.

Marlene M. McKinley, *Lecturer in English*. B.A., Carnegie-Mellon University; Ph.D., University of Chicago.

Robert A. McLean, *Senior Lecturer in Journalism*. B.A., Northeastern University.

John D. Mooney, *Lecturer in Education*. B.A., Boston College; M.Ed., Boston State College.

Paul E. Murphy, *Lecturer in Education*. B.S., Salem State; Ed.M., Boston University.

Rose Ann Najarian, *Lecturer in Education*. B.S., Ed.M., Boston University.

Christopher J. Nteta, *Lecturer in History*. B.A., Fort Hare University; B.D., Th.M., Harvard University.

Carmen J. Quintiliani, *Lecturer in Education*. B.S. in Ed., Suffolk University; M.Ed., Northeastern University; C.A.G.S., Ed.D., Boston University.

Paul Rabchenuk, *Lecturer in Government*. A.B., Suffolk University; M.P.A., University of Pittsburgh.

Donald J. Redpath, *Lecturer in Chemistry*. B.S., M.A. in Ed., M.S., Suffolk University.

Harald A. T. Reiche, *Senior Lecturer in Humanities*. A.B., A.M., Ph.D., Harvard.

Gerald Richman, *Lecturer in English*. B.A., University of Massachusetts; B.A., M.A., Brasenose College, Oxford University, England; M.Phil., Yale University; Ph.D., Yale University.

Sharon Rivo, *Lecturer in Journalism*. B.A., Brandeis University; M.A., University of California.

Carol Robb, *Lecturer in Humanities*. B.A., Kansas University; M.A., Ph.D., Boston University.

Jerome Sadow, *Lecturer in Journalism*. B.A., University of Massachusetts; M.A., New York University; M.S., Columbia University.

Richard P. Santeusano, *Lecturer in Education*. A.B., Suffolk University; Ed.M., Northeastern University; Ed.D., University of Massachusetts (Amherst).

Harold E. Shively, *Senior Lecturer in Education*. B.S., Ohio State University; M.A., Columbia University; Ed.D. (Hon.), Suffolk University.

Lewis P. Simons, *Lecturer in Philosophy*. B.S., Suffolk University; M.S., Boston University; Ph.D., Boston College.

Edward R. Skeffington, *Lecturer in Sociology*. A.B., Boston University; LL.B., Suffolk University.

Paul Sullivan, *Lecturer in Communications and Speech*. B.S., Suffolk University; M.A., University of Maryland.

Elizabeth J. Tenore, *Lecturer in Education*. A.B., Boston University; M.Ed., Northeastern University.

Samuel E. Toto, *Lecturer in Education*. A.B., Providence College; M.Ed., Tufts University; Ed.D., Boston University.

Tan VoVan, *Lecturer of Mathematics*. Licence es Sciences Mathematiques, University of Geneva; M.A., Ph.D., Brandeis University.

Rhonda K. Weinstein, *Lecturer in Education*. A.B., Mount Holyoke; M.A., Suffolk University.

Thompson F. Williams, Jr., *Lecturer in Sociology*. A.B., Suffolk University; M.S.W., Wayne State University.

Thomas L. Wilton, *Lecturer in Education*. B.A., Tufts University; M.Ed., State College at Boston; M.A.T., Salem State College; C.A.G.S., Boston University.

Joseph W. Zabriskie, *Lecturer in Sociology*. B.S., University of Maine; M.Ed., Ed.D., Boston University.

Aline P. Zoldbrod, *Lecturer in Sociology*. B.A., Oberlin College; M.S.W., Ph.D., Brandeis University.

Melanie Zybala, *Lecturer in History*. B.A., Smith College; M.A., Boston College.

ADJUNCT FACULTY IN MEDICAL TECHNOLOGY

Germaine L. Dagenais, *Lecturer in Medical Technology*. A.S., Windham College; B.S., Fitchburg State College. *Educational Coordinator*, Henry Heywood Memorial Hospital School of Medical Technology, Gardiner, MA.

Chikao G. Hori, *Adjunct Professor of Biology*. B.A., University of British Columbia; M.S., McGill; M.D., University of Chicago. *Director*, Cambridge Hospital School of Medical Technology.

Dieter H. Keller, *Adjunct Professor of Biology*. B.A., Amherst College; M.D., Tufts University. *Director*, Henry Heywood Memorial Hospital School of Medical Technology, Gardner.

John H. Meeker, *Adjunct Professor of Biology*. M.D., George Washington University School of Medicine. *Director*, Newton-Wellesley Hospital School of Medical Technology.

Anne Pollock, *Lecturer in Medical Technology*. B.A., University of Maine. Educational Coordinator, Newton-Wellesley Hospital School of Medical Technology.

Dorothy Tekula, *Lecturer in Medical Technology*. B.S., Boston State College; Educational Coordinator, Cambridge Hospital School of Medical Technology.

MARINE SCIENCE CURRICULUM IMPLEMENTATION PROGRAM (NSF)

Arthur O. Bedard, *Lecturer in Science*. A.B., Marist College; M.S., Southeastern Massachusetts University.

John J. Crowley, *Lecturer in Science*. B.S., Boston State College; M.S., Syracuse University.

F. Russell Forsythe, *Lecturer in Science*. B.S., M.S., Boston University.

George W. Hahn, *Lecturer in Science*. B.S., M.S., University of Illinois; M.A., Brown University.

Warren M. Little, *Adjunct Professor in Science*. B.A., Harvard University; Ed.M., Tufts University; Ed.D., University of Massachusetts.

Linda S. Lucchesi, *Senior Lecturer in Science*. B.A., Rosemont College; M.A., M.S., Lehigh University.

Warren C. Tomkiewicz, *Lecturer in Science*. B.S., Plymouth State College; M.S., Northeastern University.

FACULTY STANDING COMMITTEES FOR 1979-1980

Committees of the Office of the President

Alumni Relations:

Chairperson: Dr. West. *Members:* Mr. Connelly, Dr. Clark, Mr. Diamond, Mr. J.D. McCarthy, Mr. Kindregan, Dr. S. Mahoney, Dr. Shatkin, Dr. Webb, and Mr. Jones.

Community Relations:

Chairperson: Mr. Castanino. *Members:* Mr. Connelly, Dr. Clark, Ms. Peterson, Mr. Maleson, Mr. Parks, Mr. Stefaney, and Dr. Trooboff.

Long Range Planning:

Chairperson: Associate Dean Strain. *College Members:* Dr. Elmusa, Dr. Bonaventura, Mr. Slater, Dr. Levitan, Dean McDowell, Dean Ronayne, Dr. Sullivan, Dr. Unger, Dr. Vogel, Dr. W. Johnson, Dr. Wetherbee. *Law School Members:* Mr. Callahan, Mr. Maleson, and Dean Sargent.

Status of Women:

Convener: To be announced. *Recorder:* Ms. Bliss. *Members:* Mr. Eonas, Ms. Holt, Dr. Mishara, Ms. Talmadge, Dr. Robb, Dr. Wertz, Dr. West, Dr. Wetherbee, Ms. Karen Hickey. Student representatives from the College of Liberal Arts and Sciences, the Law School, and the College of Business Administration and the Graduate School of Administration.

**Joint Committees of the College of Liberal Arts and Sciences,
College of Business Administration, and Law School**

Heritage Committee:

Chairperson: Dr. Robbins. *Members:* Mr. Amidon, Dr. Cavanagh, Mr. Connelly, Mr. Griffin, Dr. Hartmann, Dr. Hughes, Mr. Jones, Dr. Robb, Dr. Stone, Dr. Strain, Dr. Vogel, Dr. West, Ms. Zybalá. *Law School Members:* Ms. Brown and Mr. Maleson.

**Joint Committee of the College of Liberal Arts and Sciences,
and College of Business Administration**

Joint Council on Student Affairs:

Chairperson: Dean Sullivan. *Members:* Deans McDowell and Ronayne, Associate Dean Strain, and Ms. Williams. Eight faculty representatives (elected annually), President of Student Government, Editor of the *Suffolk Journal*. One student representative each from the Freshman, Sophomore, Junior and Senior classes, and one from the Evening Division Student Association.

**Committees of the College
of Liberal Arts and Sciences**

Academic Standing:

Chairperson: Assistant Dean Sartwell. *Members:* Dr. Boutelle, Dr. Bray, Dr. Cavanagh, Dr. Elmusa, Dr. Fiore, Dr. Garni, Dr. Hajj, Dr. W. Johnson, Dr. MacVicar, Dr. S. Mahoney, Dr. Donald Morton, Dr. Patterson, Dr. Sawhney, and Dean Sullivan.

Admissions and Retention:

Chairperson: Dr. W. Johnson. *Members:* Dr. Berg, Dr. Boudreau, Mr. Buckingham, Dr. Cavanagh, Mr. Coughlin, Dr. Garni, Dr. Greenberg, Dr. Hajj, Dr. Jokinen, Dr. Lewis, Dr. Merzlake, Dr. Preiss, Dean Sartwell, Dean Sullivan, and Dr. Webb.

Continuing Education:

Chairperson: Dr. M. Mahoney. *Members:* Mrs. Ash, Dr. Boutelle, Dr. DiGuglielmo, Dr. Greenberg, Ms. Guilbert, Dr. Hannah, Dr. Latta, Ms. Mack, Dr. S. Mahoney, Dr. Sawhney, Dean Sartwell, and Dean Strain.

Curriculum:

Chairperson: Dr. West. *Members:* Ms. Barrett, Dr. Bigelow, Dr. Boudreau, Dr. Bray, Dr. Cohn, Dr. Harris, Dr. Howe, Dr. Hajj, Dr. Katz, Dr. Latta, Dr. Lewandowski, Dr. Richmond, Dr. Robbins, Dr. Zuckerstatter, and three student members.

Educational Policy (Elected Committee):

Chairperson: Dean Ronayne. *Members:* Associate Dean Strain, and members elected by the faculty in eight groups with two at large.

Summer Session:

Chairperson: Dr. Eskedal. *Members:* Dr. Bain, Dr. Cohn, Dr. Jennings, Dr. Leftin, Dr. Merzlake, Dr. Pearl, Dr. J. L. Sullivan, Dean Strain, and Dr. Winters.

Excess Courses:

Chairperson: Dr. Boutelle. *Members:* Dr. Feldman, Dr. Leftin, Dr. Morton, and Mr. O'Callaghan.

Faculty Life (Elected Committee):

Chairperson: Elected by Committee. *Members:* Six elected by the faculty for a two year term.

Fulbright and Danforth Scholarships:

Chairperson: Dr. R. K. Johnson. *Members:* Dr. DeGuglielmo, Dr. Fang, Dr. Lloyd, Dr. Myrvaagnes, Dr. Outwater, and Dr. Robbins.

Health Careers:

Chairperson: Dr. Lamont. *Members:* Mr. Buckingham, Dr. Greenberg, Dr. DeGuglielmo, Dr. Hannah, Dr. Feldman, Dr. Jokinen, Dr. Mulvey, Dr. Richmond, and Dr. Wertz.

Lecture Series:

Chairperson: To be announced. *Members:* Dr. Bain, Mr. Castanino, Dr. Cohn, Dr. Carr, Dr. Harris, Dr. Ledesma, Dr. Mendez-Herrera, Dr. Millner, Dr. Wilkins, Dr. Zuckerstatter, and Dr. Howe.

Library:

Chairperson: Dr. Chaisson. *Members:* Dr. Berg, Mr. Stefaney, Dr. Fiore, Mr. Garneau, Dr. Leftin, Dr. Millner, Dr. Myrvaagnes, Dr. Preiss, Ms. Williams, Dr. Robbins, Dr. Sahakian, Mr. Shannon, Dr. Topitzer, and Mr. Hamann, *ex officio*.

L.I.F.E.:

Chairperson: Dr. Myrvaagnes. *Members:* Dr. Cavanagh, Dr. Good, Dr. Wilkins, Dr. Ezust, Mr. Marchant, and Dr. Mendez-Herrera, the three student members.

Magnet Project Development Group for the Boston Public Schools:

Dr. McCarthy, *Campus Coordinator*; Dr. Boudreau, *advisor*; Dr. Jennings, *advisor*.

The constituency of the development group changes according to the logic of specific educational projects under development with two public schools: Copley Square High School, and the Boston Trade Comprehensive High School.

Minority Students:

Chairperson: Co-ordinator of Minority Student Affairs (to be announced). *Members:* Mr. Cannon, Dr. Clark, Mr. Coughlin, Ms. Dushku, Dr. Eskedal, Dr. Garni, Dr. Greenberg, Mr. Jones, Ms. Hickey, Ms. Monahan, Ms. Peterson, Dr. Sawhney, Mr. Shawcross, Dean Sullivan, and Dr. Winters.

Promotion, Tenure, and Review (Elected Committee):

Chairperson: Dean Ronayne. *Members:* Associate Dean Strain, and other members elected annually by the faculty from Humanities, Social Science, and Natural Science. The Chairperson has the option of appointing two additional faculty members.

Research:

Chairperson: Dr. Millner. *Members:* Dr. Berg, Dr. Mulvey, Dr. Hajj, Ms. Jurich, Dr. Leftin, Dr. Marshall, Dr. Pearl, Dr. Shatkin, and Dr. Sarafian.

Research and Development of Instruction and Learning:

Chairperson: To be selected. *Members:* Dr. Chaisson, Dr. Lamont, Dr. Katz, Dr. Korn, Dr. Lloyd, Dr. M. Mahoney, Dr. Jennings, Dr. Mishara, Mr. O'Callaghan, Dr. Outwater, Dr. M. Richmond, and Dr. Topitzer.

Safari (Study of, at Foreign Academically Recognized Institutions):

Chairperson: To be announced. *Members:* Dr. Boudreau, Dr. Eskedal, Dr. Hajj, Dr. R. K. Johnson, Dr. W. Johnson, Dr. Latta, Dr. Leftin, Dr. Sarafian, Dean Sullivan, and Dr. Wilkins.

Social Committee:

Chairperson: Dr. Cavanagh. *Members:* Dr. Mendez-Herrera, Dr. Marshall, Dr. M. Mahoney, Mr. Nelson, Dr. McCarthy.

Student Advising:

Chairperson: Dean Sullivan. *Members:* Dr. Cavanagh, Ms. Dushku, Dr. Elmusa, Dr. Good, Dr. Hannah, Ms. Hughes, Mr. Stefaney, Ms. Mack, Dr. M. Mahoney, Dean Sartwell, Dr. Topitzer, and Dr. West.

Student Conduct:

A joint faculty, student and administration committee to be selected as needed.

Student Life:

Chairperson: Dr. MacVicar. *Members:* Dr. DiGuglielmo, Mr. Garneau, Dr. Jokinen, Dr. Lloyd, Dr. MacVicar, Mr. Marchant, Dr. Mendez-Herrera, Dr. Robbins, Dr. Sawhney, Dean Sullivan, and Dr. Winters.

Student Publications:

Chairperson: Mr. Barach. *Members:* Dr. Bray, Mr. Colburn, Mr. Connors, Dr. Ezust, Dr. R. K. Johnson, Mr. P. R. Jones, Dr. Leftin, Dr. S. Mahoney, Ms. Lottridge, Dr. Preiss, Dean Sullivan, Student Editor of *Venture*, *The Suffolk Journal*, the *Beacon*, and student Editor, *Suffolk Evening Voice*.

Teacher Education:

Chairperson: Dr. Bates. *Members:* Dr. Unger, Dr. Bigelow, Dr. Bonaventura, Dr. Ezust, Dr. Chiasson, Dr. W. Johnson, Dr. Katz, Dr. Harris, Dr. Outwater, Dr. West, and Ms. Williams.

Phi Beta Kappa Faculty Committee

Ms. Joanne Arnaud, Mr. Robert Lisle Baker, Esq., Dr. John Berg, Mrs. Betty Brody, Mr. William J. Buckingham, Dr. H. Edward Clark, Dr. Donald L. Cohn, Dr. Judith Elmusa, Trustee Vincent A. Fulmer, Dr. William E. Good, Jr., Dr. Donald W. Goodrich, Dr. Christopher Harding, Dr. Edward G. Hartmann, Dr. Walter H. Johnson, Jr., Dr. Hayes C. Lamont, Dr. Cynthia Latta, Ms. Ruth Lottridge, Dr. Alexander E. Mandl, Ms. Bette Mandl, Mr. Frederick J. Marchant, Dr. Anthony G. Merzlak, Dr. Stuart A. Millner, Dr. Steven Patterson, Mr. Richard M. Perlmutter, Esq., Dr. Margaret W. Raben, Dr. Gerald Richman, Dr. David Robbins, Dr. Donald M. Unger, Dr. Stanley M. Vogel, and Ms. Louise Weinberg, Esq.

**Advisory Committee for
Crime and Delinquency Programs**

Louis G. Maglio, Chief Probation Officer, Boston Juvenile Court
Henry Mascarello, Executive Director, Crime and Justice Foundation
Edward D. McClure, Community Relations, U.S. Dept. of Justice

Advisory Committee for Education

Dr. Nicholas J. Buffone, Professor of Education, Department of Curriculum and Instruction, Northeastern University.

Dr. John Conner, Dean of Faculty, Massachusetts Bay Community College

Mr. Anthony T. Dileo, Head of History Department, Dorchester High School

Mr. Frederick J. Gibson, Assistant Superintendent of Schools, Everett Public School System

Ms. Cynthia W. Gilles, Director, Special Education Manpower Project, Division of Special Education, Massachusetts Department of Education

Dr. Phyllis M. Henry, Associate Professor of Education and Acting Chairperson, Department of Childhood and Curriculum Education, School of Education, Boston University

Mr. Girard Hottleman, Assistant Executive Secretary for Programs, Massachusetts Teacher Association

Dr. Elizabeth Mahan, Chairman, Department of Education, Framingham State College

Mr. John Mahoney, Headmaster for Administration, Brockton High School

Mr. Rodney Mansfield, Assistant Superintendent for Curriculum and Instruction, Merrimack Public School System

Mr. Martin Martinian, Senior Supervisor of Education, Bureau of Student Services, State Department of Education

Mr. Charles Murphy, Head of English Department, Walsh Middle School, Framingham Public School System

Mr. F. Edward Nicholas, Superintendent of Schools, Plymouth Public School System

Dr. John Robinson, Chairman, Department of Education, Simmons College

Ms. Rhonda Weinstein, Elementary Teacher, Health School, Brookline

Mr. Harold A. Wiper, Teacher of Biology, Newton Public School System

Dr. Leonard P. Zani, Dean of Students, Salem State College

Advisory Committee for Child Welfare and Social Work

Albert F. Hanwell, Chairman; Associate Professor, Boston College Graduate School of Social Work

Dr. John V. Driscoll, Research and Demonstration Specialist, Social and Rehabilitation Services, U.S. Dept. of Health, Education, and Welfare

Clifford W. Falby, Executive Director, New England Home for Little Wanderers

Pauline Gamache, Social Worker, Home for Italian Children

Elaine Kohn, Director of Volunteer Services, Mass. Dept of Public Welfare

John E. McManus, Director, Children and Family Services, New Bedford

CERTAIN TRUSTEES' COMMITTEES FOR 1979-1980

Faculty Representatives to the College Committee of the Board of Trustees:

Chairperson: Speaker of the Educational Policy Committee, one elected representative from the Committee on Promotion, Tenure, and Review, one elected delegate from the Faculty Life Committee, and one delegate elected at large.

Trustees' Joint Council on University Affairs:

Chairperson: President Fulham. *Members:* Trustees Antonelli, Fulmer, Hambelton, Hession, Linnehan, and Smith, Deans McDowell, Ronayne, and Sargent. Members elected by the Faculty: Two each from the College of Business Administration, College of Liberal Arts and Sciences and Law School.

Trustees' Student Affairs Committee

Chairperson: Designated Trustee. *Members:* Three Trustees, President Fulham, Deans Sargent, Ronayne, McDowell, and Sullivan; President of the Evening Division Student Association, President of the Student Government Association, President of the Council of Presidents, President of the Student Bar Association, President of the MBA Association, and Director of Student Activities and Secretary of the Committee.

Students Accredited to the College Committee of the Suffolk University Board of Trustees

Four students accredited to meet with the Committee: President, Student Government Association; Vice-President, Student Government Association; President, Sophomore Class; President, Evening Division Student Association.

Trustees' Visiting Committee for the Humanities

Andersen, Dr. Kenneth, Professor of Speech Communication, University of Illinois, Urbana, IL.

Antonelli, Dorothy A., Trustee, Suffolk University

Bergenheim, Robert C., Publisher, Boston Herald American, 300 Harrison Avenue, Boston, MA.

Cabot, Lewis, President, Art Counsel Inc., 14 Walnut Street, Boston, MA.

Chase, John P., Trustee, Suffolk University

Edelstein, Arthur, Professor of English, College of William and Mary, Williamsburg, VA.

Fulmer, Vincent A., Chairman, Suffolk University Board of Trustees, and Chairman, Trustees' Visiting Committee for the Humanities.

Harris, Donald, Professor of Music and Composer in Residence, University of Hartford, Hartt College of Music, West Hartford, CT.

Hawkins, Dr. Seth, Director of Forensics and Professor of Rhetoric, Southern Connecticut State College, New Haven, CT.

Innis, Robert, Chairman, Department of Philosophy, University of Lowell, Lowell, MA.

Jaffe, Jacob H., Chairman, Department of Journalism, Long Island University, Brooklyn, NY.

Mazlish, Dr. Bruce, Professor of History and Head of Humanities Department, Massachusetts Institute of Technology, Cambridge, MA.

Preyer, Robert, Professor of English, Brandeis University, Waltham, MA.

Singer, Dr. Irving, Professor of Philosophy, Massachusetts Institute of Technology, Cambridge, MA.

Stein, Robert, Professor of English, University of Lowell, Lowell, MA.

Wakin, Dr. Edward, Professor of Communications, Fordham University, Bronx, NY.

Ward, Eugene, Dean of Admissions, School of the Museum of Fine Arts, Boston, MA.

Wartofsky, Marx, Professor of Philosophy, Boston University, Boston, MA.

Wolvin, Darlyn, Chairperson, Department of Speech Communication and Theatre, Prince George's Community College, Largo, MD.

Zohn, Dr. Harry, Professor of German, Brandeis University, Waltham, MA.

Trustees' Visiting Committee for Natural Sciences

Dorothy A. Antonelli, Trustee, Suffolk University

Dr. Glenn Allen Berchtold, Department of Chemistry, Massachusetts Institute of Technology

Dr. Melbourne R. Carriker, College of Marine Studies, University of Delaware

Mr. E. MacKay Fraser, Vice President, Secretary and General Counsel, LFE Corporation, Waltham

Vincent A. Fulmer, Chairman, Suffolk University Board of Trustees, and Chairman, Trustees' Visiting Committee on Natural Sciences

Dr. Janet Guernsey, Chairperson, Physics Department, Wellesley College

Dr. Anna Harrison, Department of Chemistry, Mount Holyoke College

Professor William E. Hartnett, Chairman, Department of Mathematics, State University of New York at Plattsburgh

Professor George F. Leger, Chairman, Department of Mathematics, Tufts University

Dr. Norman A. Meinkoth, Professor, Department of Biology, Swarthmore College

Dr. Kathryn A. McCarthy, Provost and Senior Vice President, Tufts University

Mr. Kenneth Sherman, Chief, Environmental Management Investigations, U.S. Department of Commerce, National Oceanic and Atmospheric Administration, National Marine Fisheries Service, Northeast Fisheries Center — Narragansett Lab, Narragansett, R.I.

Joseph B. Shanahan, Esq., Trustee, Suffolk University
 Professor Laurie J. Snell, Department of Mathematics, Dartmouth College
 Dr. Paul Taylor, Polymerics Division, Raffi & Swanson, Inc., Wilmington
 Dr. Sumner Wolsky, Vice President, Research & Development, P.R. Mallory & Co., Inc., Burlington

Trustees' Visiting Committee for the Social Sciences

Albee, Dr. Parker B., Professor of History, University of Maine at Portland-Gorham, Portland, Maine.
 Chrisman, Dr. Miriam, Professor of History, University of Massachusetts, Amherst, MA.
 Collins, John F., Esquire, Trustee, Suffolk University
 Durand, Dr. David, Professor, The Sloan School of Management, Massachusetts Institute of Technology, Cambridge, MA.
 Enloe, Dr. Cynthia, Professor of Government, Clark University, Worcester, MA.
 Fulmer, Vincent A., Chairman, Board of Trustees, Suffolk University
 Galvani, Dr. Peter F., Professor of Psychology, State University College at Brockport, Brockport, NY.
 Hambelton, Herbert C., Trustee, Suffolk University
 Hanwell, Albert F., Professor, Graduate School of Social Work, Boston College, Chestnut Hill, MA.
 Jeghelian, Dr. Alice, Special Assistant to the President and Director of Affirmative Action, Boston College, Chestnut Hill, MA.
 Jones, Dr. Douglas, Professor of History, Tufts University, Medford, MA.
 Ladd, Everett C., Director, and Professor of Political Science, Social Science Data Center, University of Connecticut, Storrs, CT.
 Leary, Dr. William J., Superintendent of Schools, Rockville Centre Union Free School District, Long Island, NY.
 Maglio, Louis G., Chief Probation Officer, Boston Juvenile Court, Boston, MA.
 Malec, Dr. Michael A., Professor of Sociology, Boston College, Chestnut Hill, MA.
 Robinson, Dr. John, Dean of Graduate Studies, Simmons College, Boston, MA.
 Sampson, Dr. Philip B., Professor and Chairman of Psychology, Tufts University, Medford, MA.
 Scionti, Dr. Joseph N., Professor of History, Southeastern Massachusetts University, North Dartmouth, MA.
 Shanahan, Joseph B., Esq., Trustee, Suffolk University, and Chairperson, Trustees' Visiting Committee for the Social Sciences
 Snyder, Dr. Walter M., Director of Personnel, Baltimore County Public Schools, Towson, MD.

FINANCIAL INFORMATION

TUITION

These rates supercede those listed on pp. 17-20.

Tuition charges are based on (1) the number of courses carried and on (2) whether the student is an undergraduate or graduate student. A full-time course load consists of either four or five courses.

All tuition charges are subject to change by action of the Board of Trustees. Any such change may be made applicable to students already enrolled in the University. It can be assumed that during your years of attendance, with continued inflation and its effect on the cost of education, tuition will probably rise each year.

Full-Time (4 to 5 courses or 12 to 15 sem. hrs. per term, day or evening)

	per year	per semester	excess courses
Undergraduate	\$2580	\$1290	\$86 per semester hour
Graduate	\$2910	\$1455	\$97 per semester hour

Part-Time (1 to 3 courses per term, day or evening), Extension and Summer Courses

Undergraduate	\$78 per semester hour or \$234 per 3 Sem. Hr. course
Graduate	\$97 per semester hour or \$291 per 3 Sem. Hr. course

DEFERRED TUITION PAYMENT

While the tuition and fees for each semester are due at the time of registration, students who find it necessary may arrange for a deferred payment plan. It must be clearly understood, however, that *each student who registers is obligated for the tuition charges of the full semester*, even though in approved emergencies the student's tuition liability may be reduced. There are two payment plans available:

Plan 1: *One payment* of all charges (for full semester) before registration for each semester. Students carrying only one course must use this plan.

Plan 2: *Two payments* — one half before registration; one half in sixty days. Open only to students carrying two or more courses.

A service charge of \$7.00 per semester is added to the tuition bill under Plan 2. A late payment fee of \$10 is assessed for late payment of tuition.

No other provision is made for installment payment, whether monthly, quarterly or otherwise, directly with the College. Parents or students who wish to make such arrangements should do so with a bank or other commercial firm that handles such financing.

TUITION LIABILITY

Students who are obliged to withdraw from the university or to drop courses before the end of the fourth week of a semester may, on approval of the Dean of Students and the Business Manager, receive a reduction of their tuition liability. Tuition liability is prorated and will be based on the date on which the Withdrawal Form or Drop Form is received by the Accounting Office. There is no tuition refunded after the fourth week of class.

FEES

Application Fee (Not refundable)	\$ 15
Tuition Deposit (Full-time day applicants only. Not refundable.)	100
Deferred Tuition (Service charge for installment payments)	7
Student Activities Fee (Full-time day students)	35
Student Activities Fee (Part-time students)	5
MBA or MPA Association Fee — full-time	10
MBA or MPA Association Fee — part-time	4
Late Tuition Payment	10
Late Registration	25
Laboratory (per term for each laboratory course)	25
Change of course (charged after second week)	10
SCUBA (per course involving SCUBA)	40
Make-Up Examination (per examination) — petition Dean of Students	10
Transcripts (first copy free, \$1.00 for second copy, and \$.50 per additional copy made at the same time)	1
Petition for Readmission (students dropped for academic or other reasons)	15
Graduation Fee — June graduation and commencement	25
January and September graduation	8

Special fees are assessed for courses involving travel, theatre tickets, and similar expenses.

Withdrawal Notice or Drop Form filed and approved within:	Student is liable for:
Two weeks of opening of term	20%
Three weeks of opening of term	50%
Four weeks of opening of term	75%
After four weeks of opening of term	100%

All adjustments in the student's tuition liability will be based on the date on which the Withdrawal Form or Drop Form is **received** by the Accounting Office. The tuition deposit of entering full-time students is non-refundable.

ACADEMIC INFORMATION

Students are normally expected to complete the curriculum requirements that appear in the University Bulletin for the year of their admission. However, it is possible for students to elect, with the concurrence of their advisor, to complete more recent curricular requirements that are developed during the period of the student's enrollment.

Chemistry

New Courses

Chemistry 3.5 — Introduction to Toxicology. 3 hours of lecture. *Prerequisite: Chemistry 2.41.*

Chemistry 4.7 — Advanced Inorganic Chemistry II. 2 hours lecture, 3-hour laboratory. *Prerequisites: Chemistry 2.2, 4.2.*

Communications and Speech

New Courses

C.Spch. 2.8 — Introduction to Criticism of American Public Address

C.Spch. 4.7 — Legal Communication

Education

New Options: Master of Science in Business Education Program

Option C Business Education — Special Education

This option provides advanced preparation for business educators in curriculum, teaching methodology and research. Emphasis is placed on teaching methodology and techniques appropriate to the special needs student.

Option D Business Education — Counselor Education

This option provides advanced preparation for business educators in curriculum, teaching methodology and research. In addition, a wide range of electives are available in counselor education which allow the individual with an interest or need for a background in counseling to explore specific topics. The program is particularly well suited for those teaching in community-based programs.

Option E Business Education — Adult Education

This option provides advanced preparation for business educators in curriculum, teaching methodology and research. A core of courses centering around the adult learner provides the individual with the techniques and skills for teaching the older learner. This option is particularly well suited for those teaching in community and junior colleges, community-based agencies, and staff-development and training programs in industry.

New Courses

Education 4.29 — Advanced Topics in Elementary Science

Education 5.35 — Administration in Early Childhood Education

Education 5.38 — Art in Childhood Education

Education 6.22 — Improvement of Instruction

Education 6.34 — History of American Education

Education 7.20 — Clinical Practice III

Education 7.21 — Clinical Practice IV

Education 7.22 — Clinical Supervision I

Education 7.23 — Clinical Supervision II

Education 7.24 — Advanced Psychometrics

Education 8.2 — Administration and Supervision of Reading Programs

Education 10.18 — Continuing Education for Business

Education 10.19 — Teaching Methodology and Instructional Materials for Adult Business Education

Education 10.60 — Business Education: Independent Research Projects

English

New Courses

Eng. 2.5 — Masters of the Drama*

Eng. 3.13 — Crime and Punishment in Literature

Eng. 3.78 — Russian Literature

Eng. 4.17 — Words Into Music

Eng. 4.47 — Literature of Sport

Eng. 4.48 — The England of Shakespeare's Kings

Eng. 4.51 — Literature of Love

*This course will satisfy one semester of the sophomore requirement in English for B.S. candidates in CLAS.

Other Changes

Free Electives in English (p. 117): add all the *new courses* to this list. Also add Eng. 3.3 and Eng. 3.4 (Great Books of World Literature).

English 4.21 (p. 125): course title changed to Boston: A City in Fiction. Title should also be changed on Free Electives in English list (p. 117).

History

New Courses

History 4.45 — Era of the 1917 Russian Revolution

History 4.21 — Modern Southern Africa: Black-White Conflict

History 4.22 — Black Civil Rights Movement in America

Journalism

Course Title Changes

Journ. 2.8 — Documentary Film

Journ. 4.7 — The Television Documentary

Journ. 3.7 — The American Cinema

Physics

New Courses

Physics 3.61-3.62 — *Integrated Circuits*

Psychological Services

Course Frequency Changes

Psychological Services 1.5-1.6 — Helping Skills: Theory and Practice. Normally offered every semester.

Psychological Services 1.3-1.4 — Interpersonal Relations. Normally offered every semester.

Sociology

Beginning Fall 1979 student majors in all sequences will no longer be restricted to 36 hours in Sociology courses. (This should appear in all sequences where 36 hours is listed now.)

New Courses

- Soc. 2.37 — Alcohol and the Family
Soc. 3.63 — Business Elites and Society

Course Title Changes

- Soc. 3.7 — Sociological Theory
Soc. 4.20 — Child Welfare Services
Soc. 6.4 — Seminar in Social Welfare

Course Number Changes

- Soc. 6.5 — *Alcoholism in American Society* should be changed to Soc. 2.36

Athletics

Athletics (Varsity) — S.U. sponsors varsity intercollegiate teams in basketball, golf, tennis, cross country, and women's teams in basketball and tennis. The University is a member of the National Collegiate Athletic Association, the Eastern Collegiate Athletic Association, the New England College Athletic Conference, the Massachusetts Association of Inter-collegiate Athletics for Women, and the Metropolitan Women's Intercollegiate Athletic Council.

Athletics (Intramurals) — Intramural sports are offered for both men and women at Suffolk University. Included in the program are flag football, basketball, softball, swimming, and tennis. Clinics are held for tennis and self-defense. Athletics also sponsors an active Club Hockey.

Honorary Societies

Alpha Kappa Delta
Alpha Sigma Lambda
Delta Alpha Pi
Delta Mu Delta
English Honors
Humanities Honors
Modern Language Honor Society
Phi Alpha Theta

Phi Sigma Tau Honorary
Pi Alpha Alpha
Pi Gamma Mu
Psi Chi
Sigma Delta Chi
Sigma Xi
Sigma Zeta Science Honorary

Student Activities

Accounting-Finance Association	Modern Language Club
Alpha Phi Omega (National Service Fraternity)	MBA Association
American Chemical Society	New Directions
American Marketing Association	Phi Alpha Tau (Communicative Arts Fraternity)
The Beacon (Yearbook)	Phi Chi Theta (Business Sorority)
Beta Beta Beta Biological Society	Phi Sigma Sigma Sorority
Black Students Association (formerly Afro-American Association)	Photography Club
Chess and Game Club	Political Science Association
Council of Presidents	Psychology Club
Delta Sigma Pi (Business Fraternity)	Public Administration Society
Evening Division Student Association	Society for the Advancement of Management
Gamma Sigma Sigma (National Service Sorority)	Student Government Association
Gold Key Society	Suffolk Evening Voice
Hellenic Cultural Club	Suffolk Journal
History Society	Tau Kappa Epsilon
Humanities Club	Venture Magazine
International Student Association	WSUB Closed Circuit Broadcasting (Television)
Irish Cultural Society	WSFR (Radio)
Latin American Association	Walter M. Burse Debating Society
Literary Society	Womens Program Committee

FINANCIAL AID

The financial aid information on pages 21-26 has been amended as follows:

HELP LOANS, GUARANTEED INSURED LOANS, AND BANK LOANS

These loan programs require a separate application from a bank or credit union in addition to the Suffolk University Financial Aid Application and Financial Aid Forms. Depending on the student's state of residence, up to \$2500. (\$5000. for graduate students) can be borrowed annually with a maximum of \$7500. (undergraduate) or \$15,000 (combined undergraduate and graduate). The interest rate is 7%, the government will pay the interest on the loan while the student is in school. Repayment of the loan by the student usually begins 9 months after graduation, but can be deferred for graduate school or service in the military, Peace Corps or VISTA. The school is required to recommend to the bank a loan amount. Students are requested to have a Suffolk University Financial Aid Application and Financial Aid Form on file prior to submission of the bank loan application.

GRANTS

Basic Educational Opportunity Grant (BEOG)

Undergraduate matriculating students enrolled for a minimum of 6 credits a semester may be entitled to an award from this federal grant source. Award amounts vary due to demonstrated financial need (as measured by the Financial Aid Form of the College Scholarship Service), but could range from \$260. up to \$1800. per academic year for full-time study.

PERMANENT CHARITIES FUND

Permanent Charities money is maintained by a private foundation and administered by Suffolk University. Scholarships are available to Massachusetts residents transferring with a minimum of 54 credit hours from an accredited two-year college within the Commonwealth into Suffolk University. The student must maintain full-time status, and demonstrate financial need as defined by the College Scholarship Service and the Financial Aid Office. This award is renewable for up to two years, or four semesters, as long as the student remains in good academic standing and continues to demonstrate financial need.

DEADLINES

February 15 — File Financial Aid Form of the College Scholarship Service

March 3 — File Suffolk University Financial Aid Application.

March 15 — Basic Grant final application deadline for processing 1979-80 requests.

April 30 — Notarized copy of Federal Income Tax Return due in Financial Aid Office.

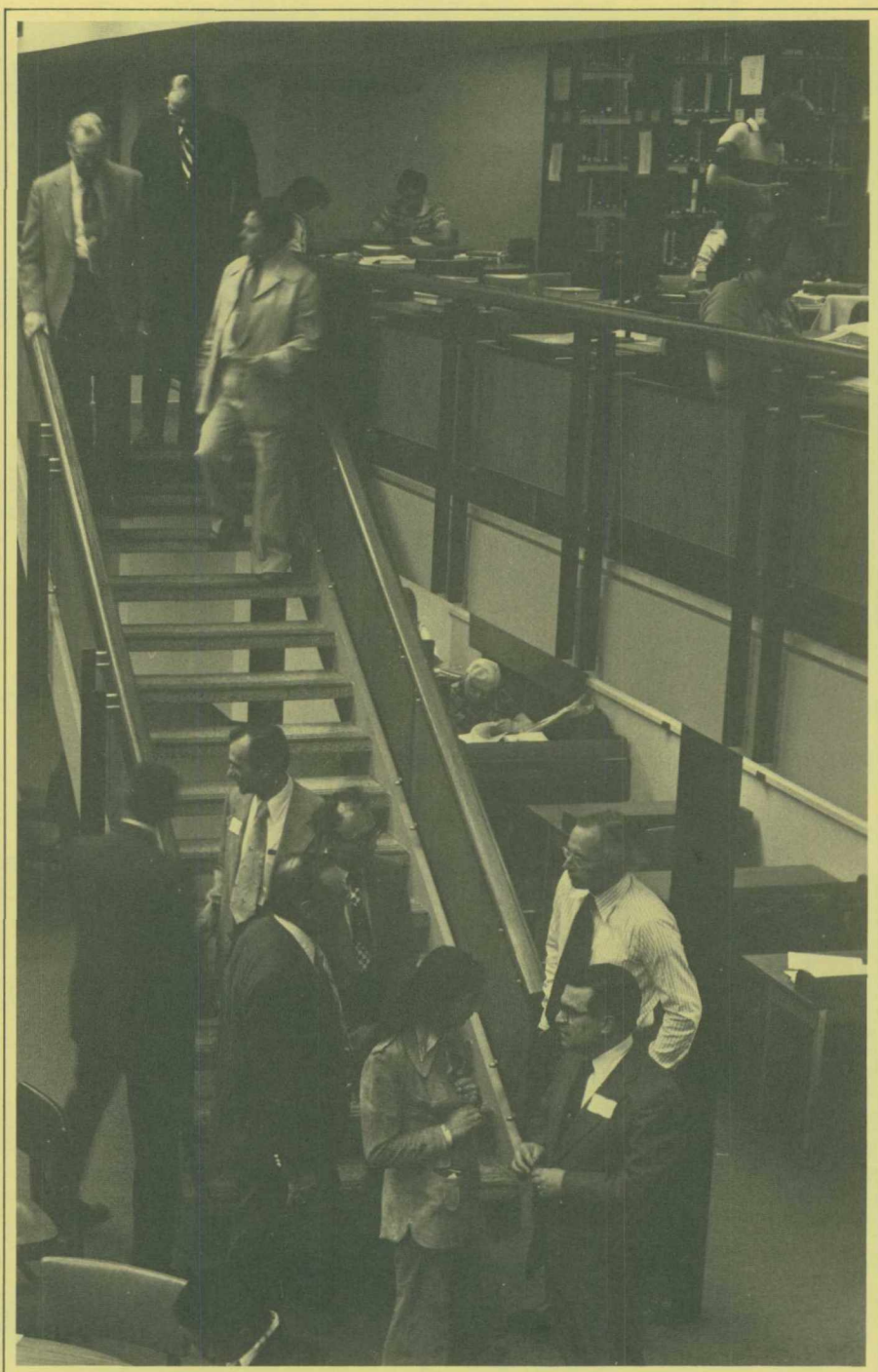
CAREER PLANNING AND PLACEMENT CENTER

The Career Planning and Placement Center exists to assist students and alumni in developing career plans, in becoming acquainted with the job market and in developing the strategies and techniques needed to secure successful employment.

Placement services include full and part-time job listings, on-campus employment interviewing, workshops in resume writing and job interview techniques, individual and group career counseling, and employment information referrals. Services also include information concerning the job market, occupational trends, and wage and salary fluctuations. In addition to these services, the Placement Center provides students and alumni access to the state job bank through its microfiche viewer.

Located within the Center is a Placement Library which contains descriptive information on over 500 companies and governmental agencies which hire at the baccalaureate and graduate levels. In addition to this, there are numerous publications concerning the current job market, future employment trends, and salary and wage information. Detailed handout materials on resume writing, job interviewing, how to develop and implement a successful job campaign and a selection of directories of government, business and educational institutions are also housed at the Placement Library.

The Career Planning and Placement Center is located in the Charles River Plaza Building and is open from 8:45 to 4:45. Individual appointments with the Director can be scheduled from 9:00 till 4:00 Monday through Friday. Visit the Center or call extension 118 for more information.



John Gillooly

1979

1980

1981

JULY							JANUARY							JULY							JANUARY						
S	M	T	W	T	F	S	S	M	T	W	T	F	S	S	M	T	W	T	F	S	S	M	T	W	T	F	S
1	2	3	4	5	6	7			1	2	3	4	5			1	2	3	4	5					1	2	3
8	9	10	11	12	13	14	6	7	8	9	10	11	12	6	7	8	9	10	11	12	4	5	6	7	8	9	10
15	16	17	18	19	20	21	13	14	15	16	17	18	19	13	14	15	16	17	18	19	11	12	13	14	15	16	17
22	23	24	25	26	27	28	20	21	22	23	24	25	26	20	21	22	23	24	25	26	18	19	20	21	22	23	24
29	30	31					27	28	29	30	31			27	28	29	30	31			25	26	27	28	29	30	31

AUGUST							FEBRUARY							AUGUST							FEBRUARY						
			1	2	3	4						1	2							1	2	3	4	5	6	7	
5	6	7	8	9	10	11								3	4	5	6	7	8	9	8	9	10	11	12	13	14
12	13	14	15	16	17	18	10	11	12	13	14	15	16	10	11	12	13	14	15	16	15	16	17	18	19	20	21
19	20	21	22	23	24	25	17	18	19	20	21	22	23	17	18	19	20	21	22	23	22	23	24	25	26	27	28
26	27	28	29	30	31		24	25	26	27	28	29		24	25	26	27	28	29	30							

SEPTEMBER							MARCH							SEPTEMBER							MARCH							
						1							1								1	2	3	4	5	6	7	
2	3	4	5	6	7	8	2	3	4	5	6	7	8		1	2	3	4	5	6	7	8	9	10	11	12	13	14
9	10	11	12	13	14	15	9	10	11	12	13	14	15	9	10	11	12	13	14	15	8	9	10	11	12	13	14	
16	17	18	19	20	21	22	16	17	18	19	20	21	22	16	17	18	19	20	21	22	15	16	17	18	19	20	21	
23	24	25	26	27	28	29	23	24	25	26	27	28	29	23	24	25	26	27	28	29	22	23	24	25	26	27	28	
30							30	31						30	31						29	30	31					

OCTOBER							APRIL							OCTOBER							APRIL							
	1	2	3	4	5	6			1	2	3	4	5					1	2	3	4				1	2	3	4
7	8	9	10	11	12	13	6	7	8	9	10	11	12	5	6	7	8	9	10	11	5	6	7	8	9	10	11	
14	15	16	17	18	19	20	13	14	15	16	17	18	19	12	13	14	15	16	17	18	12	13	14	15	16	17	18	
21	22	23	24	25	26	27	20	21	22	23	24	25	26	19	20	21	22	23	24	25	19	20	21	22	23	24	25	
28	29	30	31				27	28	29	30				26	27	28	29	30	31		26	27	28	29	30			

NOVEMBER							MAY							NOVEMBER							MAY						
				1	2	3					1	2	3						1	2					1	2	
4	5	6	7	8	9	10	4	5	6	7	8	9	10	2	3	4	5	6	7	8	3	4	5	6	7	8	9
11	12	13	14	15	16	17	11	12	13	14	15	16	17	9	10	11	12	13	14	15	10	11	12	13	14	15	16
18	19	20	21	22	23	24	18	19	20	21	22	23	24	16	17	18	19	20	21	22	17	18	19	20	21	22	23
25	26	27	28	29	30		25	26	27	28	29	30	31	23	24	25	26	27	28	29	24	25	26	27	28	29	30
														30							31						

DECEMBER							JUNE							DECEMBER							JUNE											
						1	1	2	3	4	5	6	7					1	2	3	4	5	6				1	2	3	4	5	6
2	3	4	5	6	7	8	8	9	10	11	12	13	14	7	8	9	10	11	12	13	7	8	9	10	11	12	13					
9	10	11	12	13	14	15	15	16	17	18	19	20	21	14	15	16	17	18	19	20	14	15	16	17	18	19	20					
16	17	18	19	20	21	22	22	23	24	25	26	27	28	21	22	23	24	25	26	27	21	22	23	24	25	26	27					
23	24	25	26	27	28	29	29	30						28	29	30	31				28	29	30									

COLLEGE CALENDAR

1979-1980

FALL SEMESTER 1979

September	4-7, Tuesday-Friday	Registration — New students (Returning students register by mail, April 16-May 4)
	8, Saturday	Saturday classes convene
	10, Monday	Day and Evening classes convene
	17, Monday	Last day for special student admission and for late registration
	24, Monday	Last day for course changes
October	8, Monday	<i>Columbus Day Holiday</i>
	10-11, Wednesday-Thursday	Spring and Summer Final Examination Make-up
	27, Saturday	Last date for withdrawal without penalty of "F" grade
	29, Monday	Freshman mid-term grades due
November	12, Monday	<i>Veterans Day Holiday</i>
	13, Tuesday	Monday classes meet on Tuesday to make-up for holiday. Tuesday classes and Activity Period cancelled.
	21-25, Wednesday-Sunday	Thanksgiving recess begins 1:00 p.m. Wednesday, November 21 through Sunday, November 25
December	15, Saturday	Last classes for Fall semester
	17-22, Monday-Saturday	Fall semester final examinations
	22-Jan. 13, Saturday-Sunday	<i>Winter vacation begins 5:00 p.m. Saturday, December 22, 1979, through Sunday, January 13, 1980</i>

SPRING SEMESTER 1980

January	7-11, Monday-Friday	Registration
	12, Saturday	Saturday classes convene
	14, Monday	Day and evening classes convene
	15, Tuesday	<i>Martin Luther King Day Holiday</i>
	21, Monday	Last day for Special Student admission and last day for registration
	26, Saturday	Last day for course change

February	13-14, Wednesday-Thursday 18, Monday 19, Tuesday	Fall Final Examination Make-up <i>Washington's Birthday Holiday</i> Monday classes meet on Tuesday to make up for holiday. Tuesday classes and Activity Period cancelled
March	7, Friday 8, Saturday 16-23, Sunday-Sunday 17, Monday	Freshman mid-term grades due Last date for withdrawal without penalty of "F" grade Spring Vacation <i>Evacuation Day Holiday</i>
April	1, Tuesday 7-11, Mon.-Fri. 14-18, Monday-Friday 21, Monday	Last day to apply for June graduation Faculty course advising for students continuing in the Summer Session. Summer Session registration for students attending the Spring term <i>Patriots Day Holiday</i>
May	3, Saturday 5-10, Monday-Saturday 26, Monday	Last class Final Examinations <i>Memorial Day Holiday.</i>
June	8, Sunday	Commencement Day

SUMMER SESSION 1980

May 19, Monday	Registration, First Sessions and Nine-Week Accounting Courses
May 20-June 27	First Six-Week Session
May 20-July 3	First Seven-Week Evening Session
July 7, Monday	Registration, Second Sessions
July 8-August 15	Second Six-Week Session
July 8-August 22	Second Seven-Week Evening Session

Robert S. Friedman Cobscook Bay Laboratory
Dennysville (Edmunds), Maine 04628

May 22-August 24 Marine Science Institute

To Boston & Suffolk University

As a commuter institution, Suffolk University urges students to use public transportation whenever possible. The University is located adjacent to the Massachusetts State House and near the "New Boston" Government Center, only a short walk from MBTA subway stations at Park Street, Government Center, Bowdoin, North Station, and Charles Station. It is also readily accessible by major buslines and railroads.

Students who must commute by automobile may park at a reduced rate upon presentation of a stamped parking ticket at the Charles River Plaza Garage, Boston Common Garage, and Government Center Garage.

Persons traveling by car to Suffolk from outside of Boston should use the following directions:

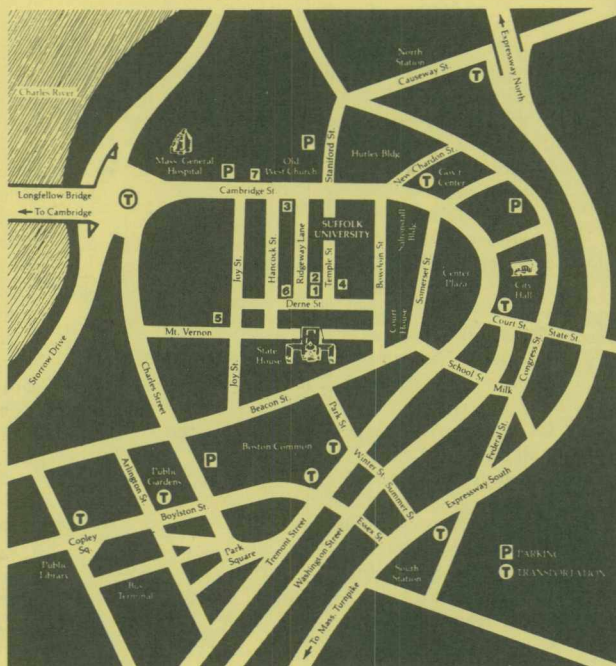
From the South — Southeast Expressway to the Causeway Street exit; Causeway Street to Staniford Street; right onto Cambridge Street to Public Parking Garage adjacent to Holiday Inn.

From the North — Expressway south to Haymarket Square exit; Government Center Garage at exit, or take New Char-don Street to Cambridge Street; right on Cambridge to Public Parking Garage.

From the West — Massachusetts Turnpike and Turnpike Extension to Expressway; Expressway north to Causeway Street exit; Causeway to Staniford Street; right onto Cambridge Street to Public Parking Garage.

Suffolk also is accessible by major bus lines, railroad and major airlines.

Students are encouraged to use public transportation.



Suffolk University

1. Archer Building
2. Donahue Building
3. Student Activities Ridgeway Building
4. 56 Temple St. — Admissions Office & Faculty Offices
5. 47 Mt. Vernon St. — College of Business Administration
6. Fenton Building — College of Liberal Arts and Sciences
7. 100 Charles River Plaza — Accounting, Personnel, Placement, Registrar, Athletics, Alumni, Public Relations.

INDEX

- Absence 39-40
- Academic Regulations 39-50
- Academic Standing 47
- Accreditation 11
- Activities 36-37
- Adjunct Faculty xvi-xvii
- Administrative Officers iii-vi
- Admissions 13-16
- Advanced Placement 14
- Advising 27-28
- Advisory Committees xx-xxi
- Alumni Association Inside Back Cover
- Application for degree 49
- Archives 28
- Associate Degrees 15, 57-58, 177, 179, 180
- Athletics xxix
- Attendance 39-40

- Bilingual (Spanish) Communication 149
- Biochemistry 79
- Biochemistry-Secondary Education 80
- Biology 61-75
- Board of Trustees ii-iii
- Bookstore 28
- Bulletin Board 31
- Business Education 104-106
- Business and Industrial Communication 85

- Calendar xxxiv-xxxvi
- Campus Ministry 28
- Career Planning and Placement Center xxxii
- Certificate of Advanced Graduate Study 214-231
- Change of address 40
- Change of course 42
- Chemistry xxvii, 76-84
- Chemistry-Business 77
- Chemistry-Secondary Education 77
- Child Welfare Program 179-181
- Class Hours 40
- Classification 44
- Clinical Chemistry 79
- Cobscook Bay Laboratory 66-67
- College Board Examinations 13
- College Level Examination program 14, 236
- College of Liberal Arts and Sciences i-xl, 51-192
- Communication Disorders 85
- Communications and Speech xxvii, 84-90
- Computer Science 90-91
- Contents 5
- Continuing Education 15
- Cooperating School Systems 99
- Counselor Education 199-202, 214-217
- Counseling 27-31
- Counseling Center 31
- Credits from Summer Sessions 43

- Crime and Delinquency Sequence 176-177
- Cross-Registration 85, 146

- Dean's Honor List 46
- Debating Society 85-86
- Degrees (Undergraduate) 52-58
- Dismissal 41, 47
- Drama 85, 86

- Early Decision Admission 13
- Economics 91-95
- Education xxvii, 95-114, 153, 193-231
- Elementary School Teaching 100-102
- Eligibility for degree 48-49
- Emerson College Affiliation 85, 146
- English xxviii, 114-126
- Entrance Examinations 13-14
- Environmental Technology 65-66
- Evening Division 233-238
- Examinations 41
- Excess courses 42

- Faculty vii-xvi
- Faculty Committees xvii-xx
- Fees xxv-xxvi
- Fenway Library Consortium 29
- Film Communication 85, 151
- Finances and Student Aid xxv-xxvi, xxxi-xxxii, 17-26
- Financial Aid xxxi-xxxii, 21-26
- Foreign Languages 127-129, 190-192
- Foreign Students 15, 30
- Foundations of Education 213
- French 127-128
- Full Program 41-42

- General Studies 238
- German 129
- Government 130-135
- Grade Reports 44
- Grading system 44-50
- Graduate Program in Education 193-231
- Graduation fee 20
- Graduation with Honors 49

- Health Careers Committee 69
- History xxviii, 136-141
- Honor Point System 45
- Honors (Dean's List) 46
- Honor Societies xxix, 32-36
- Humanities 142-145
- Humanities Option 54-55

- Independent Study Program 236
- Interdepartmental Majors 85, 107-108, 116, 142, 146, 153, 182, 192, 238
- International Students 15, 30

- Journalism xxviii, 107-108, 145-156

Laboratory fees 19
 Late Registration 39
 Liberal Arts i-xl, 51-192
 Library 28-30
 Life Studies 62
 Limitation of Time (degrees) 48-49, 194
 Linguistics 156
 Loans 22-23

Majors 53, 238
 Make-up Examinations 41
 Map xxxvii
 Marine Science 66-67
 Marketing Communication 151
 Mass Communications 85, 150
 Mathematics 156-159
 Medical Technology 63-64
 Minority Students 30
 Museum of Afro-American History 30

New Directions 30
 Normal Full Program 41-42

Objectives 51
 Office Hours (Admissions) 15-16
 Oral Interpretation 85

Pass-Fail Courses 46
 Philosophy 159-163
 Physical Education 163
 Physics xxviii, 163-165
 Placement Center xxxii
 Pre-dental 67
 Pre-legal 59-60
 Pre-medical 67-68
 Pre-optometry 68
 Pre-veterinary 68-69
 Probation and dismissal 47-50
 Psychological Services xxviii, 31, 173
 Psychology 166-173
 Public Relations 150

Readmission 15
 Refunds 19
 Registration 39
 Reports 44

Science 174
 Science Communication 152
 Science Option 54-56
 Secondary School Education 102-110
 Secondary School Teaching 119-120
 Senior Citizens 14
 Smoking 41
 Social Science Option 54-55
 Social Work Sequence 179-181
 Sociology xxix, 175-190
 Spanish 190-192
 Spanish-Sociology 182-183, 190
 Special Students 15
 Speech 84-90
 Student Activities xxx, 36-37
 Student Affairs 27-37
 Student Conduct 40-41
 Student Teaching 97-99
 Suffolk Theatre Company 86
 Summer Sessions 239-240
 Summer Student Teaching 195, 240

Teacher Certification 109-110, 199, 201, 204
 Technical Communication 152
 Theatre 86
 Time Limit (degrees) 48-49
 Transcripts 20
 Transfer Credits (Graduate Level) 194
 Transfer Credits (Undergraduate) 13
 Transfer Student Counselor 31
 Tuition xxv-xxvi
 Tuition Liability xxvi

Urban Track (Sociology) 181

Visiting Committees xxii-xxiv

Withdrawal 19, 50
 Work-Study Program 24

