

Suffolk University

Digital Collections @ Suffolk

Suffolk University Newsletter (SUN)

Suffolk University Publications

1982

Suffolk University Newsletter (SUN), vol. 11, no. 3, 1982

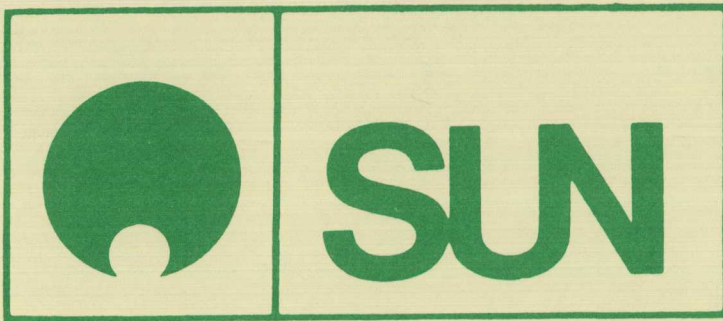
Suffolk University Office of Public Affairs

Follow this and additional works at: <https://dc.suffolk.edu/sun>

Recommended Citation

Suffolk University Office of Public Affairs, "Suffolk University Newsletter (SUN), vol. 11, no. 3, 1982" (1982). *Suffolk University Newsletter (SUN)*. 128.
<https://dc.suffolk.edu/sun/128>

This Newsletter is brought to you for free and open access by the Suffolk University Publications at Digital Collections @ Suffolk. It has been accepted for inclusion in Suffolk University Newsletter (SUN) by an authorized administrator of Digital Collections @ Suffolk. For more information, please contact dct@suffolk.edu.



THE SUFFOLK UNIVERSITY NEWSLETTER

Published by the Public Relations Office
Louis B. Connelly, Director

Volume 11 Number 3

February, 1982

CAMPAIGN FOR EXCELLENCE GOES OVER TOP BY \$884,595; REACHES \$3.6 MILLION

Suffolk University's Campaign for Excellence has gone over the top with a dramatic surge that carried the campaign well beyond its projected goal of \$2.735 million.

The campaign reached its December goal on schedule and closed out at a total of \$3,619,595, some \$884,595 above the campaign target. The successful campaign, which resulted in more than 2,600 pledges, was the most fruitful in Suffolk history, ending 33% above its goal.

President Daniel H. Perlman and Campaign Chairman John S. Howe, chairman of the Board of Trustees, noted that the results were heartening to all of the University and insured completion of the \$10 million Facilities Development Program within schedule and budget.

Tops among contributions were six pledges made through the Leadership Committee, under former President Thomas A. Fulham. The six generous contributors were Frank Sawyer, co-chairman of the Board of Avis, Inc., who received an honorary degree of commercial science in 1979; Esther E. Spillane, widow of trustee George Spillane, J.D. 1921; trustee emeritus Stephen P. Mugar; E. Albert Pallot, J.D. 1932, president and chairman of the board of Biscayne Federal Savings and Loan Association in Miami; Ida Green and Cecil Green, founding president of Texas Instruments, Dallas, Tex. (Mr. Green received an honorary doctor of commercial science degree in 1978); and Judge C. Edward Rowe, J.D. 1926, former chairman of the Board of Trustees.

Another big factor in the campaign's success was the \$250,000 challenge grant from the Kresge Foundation. Suffolk alumni and contributors responded successfully to the challenge. A total of \$172,772 was raised from alumni in the phonathon phase of the campaign. The 26 evening phonathons resulted in some 1556 pledges.

President's Corner



On Saturday, January 16 there occurred an important event in the history of Suffolk University. It was a quiet event, unheralded, and yet an event of the greatest significance to our community of teachers and learners: the doors of the Mildred F. Sawyer Library were opened for the first time to students and faculty. Only a handful of students used the new library on its opening day. But in the days that followed, word of the Sawyer Library began to spread among students and faculty as more and more of us experienced the pleasure of visiting and using the library for the first time.

With bookstacks, library services and study areas arrayed on four-floor levels, the new library has a spaciousness quite lacking in the old. Even beyond the added quantity of floor space, however, its arrangement and configuration invite use: browsing, studying, conferring, researching and, above all, reading. The success of the library, and it is not too soon to see that it is a success, is due to the careful planning of Library Director Ted Hamann and his staff working with the architect Dick Bridge and the distinguished library consultant Keyes Metcalf. The location of the library, on the lowest floors of our new building, was dictated by the need to have the weight of the books rest on a bedrock foundation. But the entrance to the library, directly off the lobby, seems to symbolize the importance of books in an academic community. A newer form of information storage and retrieval is evident in our computer center and in the terminal room. An ancient tool of learning, the slate or chalkboard, is also present at 8 Ashburton Place.

But neither the silicone chip nor the piece of chalk are as central to the collegiate curriculum as the book.

Having space in the new library for the collection to grow and expand suggests that for all of us, students and faculty, there is now room for greater intellectual growth and expansion. Since we will no longer have to assiduously weed older books from the collection to make way for the new, we can remain in touch with the roots and stems of our disciplines as well as their current flowerings.

The formal dedication of the new library, and of the Frank Sawyer Building in which it is located, will occur in the spring, but its use by students and faculty is a deeper dedication of which the other is only symbolic. I am also pleased that the space in the Archer Building, vacated by the mid-winter move of books to Ashburton Place, will be renovated this spring and summer for use by the Law School Library which will then be the largest legal library in Boston. Around books and teaching we build a community of learning.

Daniel H. Perlman

JOANNE E. CARR SUCCUMBS AT 33



Dr. Joanne E. Carr, director of special education and assistant professor of education, died Jan. 26 at Mass. General Hospital after suffering a heart attack at her home on Beacon Hill. She was 33 years old.

Prof. Carr had joined the faculty in July of 1978 after working as a specialist in the field of the emotionally handicapped. A personable, popular figure on campus, she was a member of the Lecture Committee. She had recently started a course in human sexuality and also taught three courses in special education. Last Fall she was featured on a Channel 38 "Daytime" show for an interview.

President Daniel H. Perlman expressed shock over Prof. Carr's death and issued the following statement:

"It is a shock to all of us and tragic for the University to lose such a dynamic, young and vital member of its family. Prof. Carr was known and respected throughout the Suffolk University community because of the breadth of her professional interests and her vivacious personality. In the three years she was affiliated with Suffolk University she developed a strong following of students and a wide network of professional friends among faculty and in the broader field of special education. She contributed actively to the growth of her professional discipline and field and was successful in interesting students and faculty of allied disciplines in her work. She will be deeply mourned and long remembered by the entire Suffolk University community. We send our deepest condolences to her family and fiancé."

A native of Albany, N.Y., she grew up in St. Petersburg, Fla., received her A.B. from the University of Florida in 1970, a master's degree in education from University of South Florida and

her Ph.D. in special education from the University of Georgia.

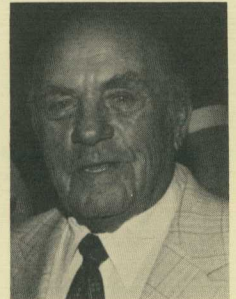
She had recently become engaged to Russel Pergament of Brookline. She leaves her mother, Mrs. Eleanor Brainin, and stepfather, Abrasha Brainin of St. Petersburg Beach and two brothers, Robert of Ashville, N.C., and Howard Carr of Lawrence, Kansas.

#

ASHBURTON BUILDING WILL BE NAMED FOR BENEFACTOR FRANK SAWYER

On the heels of the successfully completed Campaign for Excellence, the University has announced that it will name its newly renovated Ashburton Building, the Frank Sawyer Building, in honor of the Boston businessman and generous Suffolk benefactor.

Sawyer, co-chairman of the board of Avis, Inc., and the largest single individual donor to the campaign, made a contribution of \$200,000 early in the campaign and followed that gift up with a substantial contribution late in the campaign.



Sawyer

It is expected that the 12-story Sawyer Building will be dedicated in the Spring at a date to be announced. The Sawyers are wintering in Florida.

Frank Sawyer, a self-made individual who started Checker Taxi Co., was awarded an honorary doctor of commercial science degree from the University in 1979.

President Perlman has also announced that the new four-level library has been named the Mildred F. Sawyer Library for the wife of Sawyer.

(Continued on Page Four)

ROTC DOING WELL AT SUFFOLK BUT IT WILL TAKE TIME, SAYS HEAD OF PROGRAM

"There has been an excellent attitude on the part of students toward ROTC at Suffolk," says Capt. Joseph Paddock, professor of military science for the new program at the University.

"The interest is there, but it's just going to take time to get more students involved in the program," he cautions.

Paddock says 45 students are presently enrolled in the program, 25 of whom have cross-registered from the University of Massachusetts, Bunker Hill Community College, and New England School of Law. There are six women enrolled.

Paddock says most of the students are enrolled in the advanced part of the program. He recommends students enter the program in their freshman year, noting that federal statutes require students to have at least two years of study remaining and some way of obtaining credit for the first two years of the program before entering.

Last Summer, Paddock ran a mail campaign to freshmen in coordination with the admissions office and received more than 60 responses.

Scholarship qualifications may be acquired by contacting Capt. Paddock at 723-4700, Ext. 224 or by visiting Archer 15. The entire program is worth 14 credits but only three of the credits may be applied toward graduation in both College of Liberal Arts or the School of Management upon completion of the advanced course.

#

(Ashburton Bldg. Cont. from Page Three)

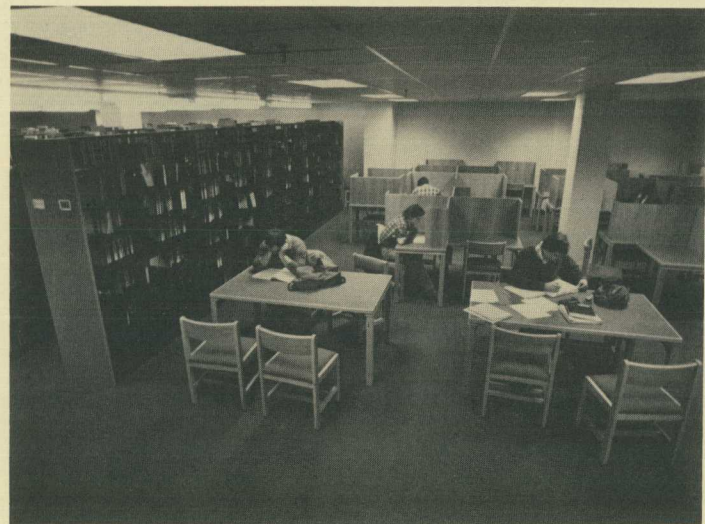
Commenting on the new CLAS, SOM Library, Librarian Edmund Hamann said, "There is 50 per cent more space than in the old library. And there is the capacity to hold 130,000 books." Currently the library shelves 82,000 books.

There are six group study rooms, a faculty reading room, a small conference room and six typing carrells. Also, an elevator in the library makes all floors and bookstacks accessible to handicapped persons.

Hamann says, "We added a sense of quality. We brought what has existed into a new environment - that's what is new."

According to Hamann, "It is already apparent that the use of the library is increasing." And the reference librarians have been called upon to administer more library services and instructions.

"We have received an overwhelming response to the new library," adds Hamann.



NEW LIBRARY - This shot was one of the first taken of the interior of the new Mildred F. Sawyer Library and students wasted no time moving in to study.

Faculty News

CLAS

During the past couple of years, Sociology's JOHN SULLIVAN has been conducting some research into the professional roles of air pilots and flight controllers and some of his findings are contained in a paper entitled "Some Relationships between Behavioral Factors and Line Oriented Flight Training" published in *Flight Line*, the flight operations journal for flight training program development of Eastern Airlines. . .



Sullivan

STEVE SHATKIN of Education was in Johannesburg, South Africa in October to address 50 psychologists and researchers at the National Institute for Personnel Research. His address was entitled "Adult Development and Mid-Life Crisis in North America. . ."

The second edition of WILLIAM SAHAKIAN's *History and Systems of Sociology* was published in January jointly by McGraw Hill Book Co. and Hemisphere Publishing Co. The new edition covers important trends in sociobiology, ethology, attribution theory, and dissonance theory. . . A number of (Humanities) RAY PARKS' paintings will be on display at the Goethe Institute from March 1-16, at the personal invitation of Anneliese Harding, art historian of the Institute. . . JOHN SHANNON of Government and Economics has reviewed more than a dozen economics texts for the Richard D. Irwin, Inc. publishing company and has been retained for more with this salute from Editor Paul V. Short: "Your knowledge of the economics area...is of great value to us and our editorial program. . ."

MALCOLM BARACH of Journalism has been notified that the Newspaper Fund, Inc. has again approved a grant for the proposed Urban Journalism Workshop for minority high schoolers, the amount - \$3275. . . FRED WILKINS of English has been elected to a two-year term as vice president of the Eugene O'Neill Society at its December meeting in New York City. . . BETTE MANDL spoke to the annual meeting of the National Council of Teachers of English. Her topic was on her dissertation research, "The Mentorship Factor: Men, Women and Fiction-Reading." Mandl also has an article, "Martha Orest: The Dynamics Mood," in the Winter issue of the *Doris Lessing Newsletter*. . . The English Department's Lecture Series will feature these faculty and current research projects: ANN HUGHES (humor in the Old Testament), BLAIR BIGELOW (American political discourse as literature), and BOB JOHNSON, who opened the series with a humorous talk on research on film producer Francis Ford Coppola and Neil Simon. . . LOUIS A. D'ABROSCA of Education served as chairman of an accreditation team to the Kinvon-Campbell School in New Bedford early in January...

SOM

George C. Lodge, professor of business administration at Harvard Graduate School of Business Administration, was the key speaker at the school's Distinguished Speakers Series Jan. 21. Lodge, son of former UN Ambassador and Senator Henry Cabot Lodge, spoke on "The Uses of Ideology for Managers." Lodge said that President Reagan's 1981 economic program "may well turn out to mark the beginning of an explicit recognition that the U.S. economy requires government planning - if not a planned economy."

Lodge noted that government is already big in this country, probably bigger proportionately than some socialist countries with 19 per cent of the labor force working for some government agency and one-third of American people deriving their livelihood in some way from the federal government. . .

(Continued on Page Six)

DR. WARREN BRIGGS of Management is general chairman of a conference "Evaluating Decision Support Software - a Managerial Perspective" which will be held at Suffolk on March 17. A consortium of local professional societies is sponsoring the conference. Speakers will include Profs. Peter Keen and Mike Scott Morton of the M.I.T. Sloan School. A panel of users will discuss their methods for specifying, evaluating and implementing DSS Software. Briggs says the conference is particularly relevant for people considering the use of decision support systems for financial planning, budget analysis and strategic evaluations. Briggs will present a paper related to the topic of DSS package evaluation at a meeting March 18 at Babson College...

Asst. Dean RONALD SUNDBERG has been invited to serve on the Association for Continuing Higher Education's Publications Committee and editorial review board for *Continuing Higher Education*... FRAN BURKE of Public Management has been seen on the television news as a member of the former Ward committee. She also testified at the Commission on Campaign Financing hearing in December concerning the director's position in the office of Political and Campaign Finance. . . . Accounting Prof. BOB WAEHLER authored an article and review, "Management of an Accounting Practice," in the October issue of *The Accounting Review*. . . . *The Federal Granting System*, a guide for local governments in Massachusetts, co-authored by Public Management's DON LEVITAN, is in its third printing and has been cited in the *Federal Catalog of Federal Domestic Assistance*. . . .

LAW SCHOOL

JOHN C. DELISO, director of law placement, has been appointed assistant dean of the law school. Deliso's assistant, BETSY MCCOMBS, will succeed him as placement director.

In his new position, Deliso will work closely with Dean DAVID J. SARGENT in coordinating law school administrative

functions and also serve as a liaison to the University's alumni and development office.

Deliso, a 1972 graduate of Suffolk Law School, established the admissions office, headed that office for six years and has been placement director for the past two years.



Deliso

McCombs has been assistant placement director since 1975 and before that was a staff assistant to the general counsel for the Mass. Office of Human Services.



McCombs

Said Dean Sargent in announcing the appointments: "John Deliso and Elizabeth McCombs are professionals of the highest caliber and during nearly 15 combined years of service have been instrumental in the rapid development of Suffolk University Law School as one of the nation's outstanding law schools."

Associate Prof. TOM McMAHON was a participant in a seminar held on January 20 by the Boston Patent Law Association on recent developments in intellectual property law. He was a panelist in the copyright portion of the update. . . . The current issue of the *Law Library Journal* (Vol. 74 No. 1) contains an article on legal anecdotes by Librarian ED BANDER who is hosting a meeting of the Law Librarians of New England at the law school on Mar. 18-20 to discuss uses of video in law school, law firms and the law courts. . . . PROF. CHARLIE KINDREGAN recently addressed the North Carolina Bar Association Legal Foundation. . . . STEVE HICKS has been invited to present a report on Islamic law at the XI Congress of Comparative Law in Caracas, Venezuela. . . .

FACULTY, STUDENTS SAIL CARIBBEAN ON TALL SHIP

By Maryann Bartolo

Four Suffolk University students accompanied by three faculty explored the waters of the Caribbean this past month while on an educational-research trip aboard the Tall Ship Regina Maris.

The marine-biology program, considered a four credit course, is Suffolk's first effort to uncover a marine environment in a tropical setting to suit its study needs.

And according to Dr. Arthur West, chairman and professor of biology, this first effort has been "successful."

Said West of the trip, "It was a very challenging experience. And we are looking at the potential of doing it again." He pointed out that having a ship as their base provided easy access to the water. It afforded the participants the opportunity to do much diving and exploration in the many unspoiled areas full of marine life around the islands of the Caribbean.

And West notes that the trip proved to be very informational. Says West, "We did a consensus of the types of marine organisms in the warm water environment." Temperatures and salinity were measured. Specimens were collected and both protected and unprotected reefs were explored.

The expedition embarked Monday, December 14 on its 10-day trip with Dr. Beatrice L. Snow, professor of biology and biology-computer science coordinator, Dr. James A. Blake, associate professor of biology and marine science coordinator and Don Mikes, director of the Instructional Media Center, also aboard. The participants left at 11:30 a.m. on a plane to San Juan, Puerto Rico. And there, they boarded the Tall Ship at 6 p.m. to

travel to and around some of the islands of the Caribbean including St. John and St. Thomas.

The students taking part were Stan Bloomenthal of West Newton, a business major, Emily Cieri of Everett, Robert Cefalo of East Boston, and Robert Cogswell of Somerville, all senior biology majors.

Two classes were held before the expedition and four are held after the expedition. Upon returning from the trip, the students were required to complete a project and present it at a seminar. The projects produced from this trip's study will focus on polychaetes, hard coral, soft coral, sponges, mollusks, and fish.

The expedition was recorded by Don Mikes using three standard and three underwater cameras. He used 22 rolls of film, six underwater. And he is developing a documentary as a recruitment for the Suffolk Tall Ship-marine biology program.



ABOARD THE REGINA MARIS - Taking time out from research, Suffolk group posed for the camera of Don Mikes aboard Tall Ship Regina Maris as it sailed around the Caribbean Islands.

Personnel Page

A WORD ABOUT IRA AND TDA

By Judy Minardi

IRA, TDA, All-Savers Certificates - they've all been in the news lately. They are among the most widely publicized aspects of the tax law recently enacted - the Economic Recovery Tax Act of 1981. Through new savings and investment opportunities like the All-Savers Certificates and the expanded role of some older ones, like IRAs, the tax bill encourages an increase in personal savings by offering preferential tax treatment.

What is an IRA? An IRA (Individual Retirement Account) is a tax deductible retirement savings plan. The amount which you contribute to an IRA is deductible from your gross income when you file Federal income taxes. Interest earned on IRA accumulations is sheltered from Federal income taxes until you make a withdrawal.

IRAs have been available for several years, why all the publicity now? In the past IRAs were available only to persons who did not participate in an employer-sponsored retirement or tax deferred annuity plan. Now, because of the new tax act, all workers under age 70½ may establish an IRA whether or not they participate in an employers pension plan. The new law also increases the maximum IRA deduction to \$2,000 a year (\$2,250) for an employee and non-working spouse.)

How do the IRA offerings affect you as an employee of an educational institution? For years, faculty and staff of educational institutions have been able to defer taxes on retirement savings. At Suffolk, several tax deferred annuity programs are offered including the TIAA-CREF Tax Deferred Annuity Plan (TDA), the TIAA-CREF Supplemental Retirement Annuity Plan (SRA) and the Mass. Financial Service

Tax Deferred Annuity. These tax deferred annuity plans are similar to the IRA in that contributions, as well as income earned on accumulations, are tax deferred. However, there are several substantial and important differences between the University offered tax deferred annuity programs and the IRA:

1. Contributions made to the TIAA-CREF Supplemental Retirement Annuity (SRA) may be partially or fully withdrawn at anytime with no surrender charge. (IRA contributions, withdrawn before age 59½, are subject to a 10% penalty charge.)

2. The maximum yearly amount that may be contributed to any of the tax deferred annuity programs, for most faculty and staff, is higher than the \$2,000 IRA contribution.

3. Contributions to the tax deferred annuity programs may be deducted from your paycheck before tax is withheld and are not reported as taxable income. IRA contributions are made with after tax dollars, which are later deducted on your tax return, reducing your taxable income. You may make an IRA contribution as late as the due date for the year's income tax return.

How do the tax deferred savings programs actually work? In contrast to after-tax savings methods, the money you do not pay out in current taxes goes into your annuity contract and accumulates with investment earnings. For example, assume you are in a 30% tax bracket and can get along with \$1,000 less take home pay in order to set aside funds for future use. It takes about \$1,400 of salary to produce \$1,000 take home pay, after taxes. You can either pay your tax currently on this \$1,400 of salary, which leaves \$1,000 for savings, or you can take a salary reduction of \$1,400 and channel the full \$1,400 into a tax deferred annuity. Either way, you have \$1,000 less to spend currently, but the salary reduction method puts \$400 more each year into your retirement savings. Because of the earnings on money you do

(Continued on Page Nine)

not pay to the government and the resulting build-up of funds you would not otherwise have, the salary reduction approach is likely to work to your advantage even if you are not in a lower tax bracket when benefits are received.

Will the University offer IRA programs through payroll deductions?
Because the tax deferral annuity plans already offered by the University are more flexible and liberal than the IRAs, the University will probably not offer an IRA through payroll deduction. This does not mean, of course, that you may not purchase an IRA on your own regardless of whether or not you participate in a University TDA plan. In fact, those who contribute the maximum possible amount to one of the University tax deferred annuity plans may still contribute an additional \$2,000 to an IRA.

How can I find out more about the University tax deferred annuity plans?
The Personnel Office (Ext. 415) would be happy to provide you with further information about the programs. All faculty and staff, regardless of years of service, age, status (full-time, part-time) may participate in these tax deferred annuity programs.

#

Karen Hickey of Personnel calls attention to a revised policy for school closings because of inclement weather. Staff members will be paid for any time off when the University is closed because of weather conditions. On such days when the University is open, staffers not reporting to work will not be paid unless excused by their department head. If the department head excuses the absence, it should be charged to either a vacation or personal day. People reporting late because of commuting difficulties, may, at the discretion of the department head, be paid for the whole day.

School closing announcements because of weather will be made on the following radio and television stations: WBZ, WEEI, WEZE, WHDH, WORC (Worcester), WJAR (Providence), WJDA (Quincy), WITS, WRKO, WTAG (Worcester), WPRO (Providence), WCVB-TV, Channel 5, WHYN (Springfield), WGNG (Cumberland, R.I.), and WFEA (Manchester, N.H.).

* * * *

The Accounting Office reminds those employees, and their dependents taking courses, to complete the proper form for tuition free courses. This should be done in the Personnel Office. Failure to do so will result in a bill from the Accounting Office.

* * * *

New employees this month - SANDRA CLARK of Chatham, biology technician in Biology Department; CAROL DUNN of Brighton, secretary in University Counseling Center; AMY LONG of Squantum, secretary, Financial Aid; CAROLYN COVIELLO of Revere, secretary in School of Management and FRU; JOANNE LASLO of Melrose, payroll assistant in Accounting; JEAN MOHAN, secretary in President's Office; MARJORIE BHAVNANI of Boston, secretary, School of Management and FRU; RICHARD BIELER of Somerset and RICHARD SOUSA of Somerville, clerks, Mailroom; ELISA McKNIGHT of Boston, library assistant, College Library; and CLAIRE GRANT of Dorchester, secretary, Law Admissions.

PETER MOLLO of Norwood has joined the Career Planning and Placement Office as career development coordinator under the Title III grant.

#

Potpourri

Seldom has a passing shocked and saddened the Suffolk campus as did the untimely death of JOANNE CARR. A warm and vibrant woman, Joanne brightened things wherever she went and professionally launched innovative programs in the educational field. Perhaps her fiancé, Russel Pergament, said it best: "She was in love with her work and in love with Suffolk University and reflected in her was the joy she felt working at this institution. . . ." Let's hope two of our faculty get off the injured list quickly. ART WINTERS of Education was injured in an auto accident while veteran History Prof. VAHE SARAFIAN is missing the Spring semester because of a back problem. . . . And Dean MICHAEL RONAYNE, who suffered a severely fractured ankle in a fall in the driveway of his Winchester home, is making his way to his office and keeping on top of things. . .



Ronayne

Congratulations to GLEN LEWANDOWSKI of Education who has been elected to a four-year term on the Haverhill School Committee. . . . MIKE RUBINO of College Placement has successfully completed his doctorate program at Northeastern University. His area of specialization was higher education administration. He has a B.A. from Clark and an M.Ed. from Northeastern. . . . DON FIORILLO of Sociology will again offer a pre-internship orientation program for sociology majors this term. Dates for the monthly workshops dealing with the department's field program will be announced shortly. . . . The Student Activities Office is teaming up with Collegiate Travel in Cohasset to sponsor trips to Nassau and Bermuda during the Spring break. Prices are reasonable and if you're interested contact BARBARA FIENMAN at the Activities Office. . .

Dean Emeritus DON GOODRICH has just celebrated his first wedding anniversary (Dec. 6) and has traveled to Hawaii and California. He tells his friends he'll be visiting Boston in the Spring. He now lives in Jamesburg, N.J. . . . Archivist DICK JONES reports he's received a card from former presidential secretary (to Judge Fenton) MARY MUHILLY, still active in retirement with trips to Ireland and Florida. She says hello to all of her Suffolk friends. . . . A best wish to GAIL GUNTHER, cashier in the Accounting Office, who has set a wedding date in the Fall with James Sullivan of Roslindale. . . .

Sympathies this month to SOM's DAVE RISSMILLER on the loss of his mother, Helen Rissmiller, in Ridgewood, N.J. . . . The MBA/MPA Alumni Association is holding a financial planning seminar March 2 at 6 p.m. in the Faculty-Staff Dining Room, Ashburton Building. Contact BOB WEST in Development for additional details. . . . The *Patriot Ledger* carried a heartwarming story on the deaf Guatemalan teenager brought to this country by his godfather JOE WALSH of our Admissions staff. Walsh met the young man's family while Walsh was a member of the Peace Corps in the youth's hometown and became the lad's "padrino" at his baptism. . . .

Alumnus and Evening Division devotee TONY FARMA will be profiled in an upcoming book, *Back to School, a College Guide for Adults*, written by Adelphi Prof. William Haponski and Charles F. McCabe, a former evening student at Adelphi, and published by Peterson



Farma

Press, N.Y. . . . PHIL SUTHERLAND, president of the Gold Key Society, calls attention to the College Bowl on campus Tournament rounds for this varsity sport of the mind, as Phil terms it, were held on Feb. 2, 3, 9, and 11 at 1:30 p.m. in Ashburton 427. The winning team will represent Suffolk in the regional tournament Feb. 21 at University of New Hampshire. . . .

(Continued on Page Eleven)

ED SKEFFINGTON, assistant chief probation officer at Boston Juvenile Court and part-time Suffolk sociology lecturer, reminds us that the following seniors have completed the field placement work under his direction: ANN MARIE CONNOLLY, KATHLEEN BARKER, DAVID FLEISCHMAN, and MARILU LeBEL. . . Master Lecturer DONALD SUMMERS discussed "The Emerging Role of Personnel: Helping Management Increase Productivity" at SOM's Dialogue II Jan. 28. . . Associate Marketing Professor DAVID R. WHEELER will be the speaker at Dialogue III on Feb. 16. He'll discuss "Flicker Effects and Consumer Behavior: Gaining Consumer Attention in Advertising. . ." The Career Planning and Placement Center hosted an all-day professional development workshop for company personnel giving members of the Eastern College Personnel Officers a look at the new Ashburton Building. Representatives from such companies as Union Carbide, Mobil Oil and Filene's were on hand and came from areas throughout the Eastern seaboard. . .

Communications and Speech DAVID DORWART will be leaving Suffolk at semester's end to bring his stage talent to New York City. He is designing *Almost an Eagle* starring James Whitmore for a May opening at the Wilbur. . . Suffolk's winter sports season has been highlighted by the showing of the women's basketball team. They won the recent Babson Invitational Tournament with three players, SHERYL SCANLON of Quincy, KAREN THOMAS of Boston and SUE SHEA of South Boston, a transfer from Regis, making the All-Tournament team. PAM ROSSI's team has a 7-7 record as the SUN went to press. . . Dr. Robert Azrak, assistant child psychologist at McLean Hospital, was the speaker in the second program of the University Counseling Spring Seminar Series Feb. 10. The seminars were held in Fenton 234 from 9 to 11 a.m. . . Dean MICHAEL R. RONAYNE has announced the appointments of Dr. KEVIN LYONS and SUSAN C. THAYER as director and assistant director of the Learning Resource

Center respectively under the Title III program. . . KEN GARNI, NANCY MATTEI, and PAUL KORN have been visiting counseling centers at U. of Rhode Island, Boston University, and Drew University (Madison, N.J.) as accreditation site visits. . . There are still a number of Christmas party photos of unidentified youngsters in the Public Relations Office at Ashburton 854. If your children had their photo taken, please inquire. . .

Former Suffolk reference librarian TOM DAY and his wife, Susan, have moved to Indiana where Tom is now chief reference librarian for the city of La-Porte. . . TED HAMANN of the College Library informs us that the Fenway Library Consortium has a new member in the New England Conservatory Libraries, joining Suffolk and 11 other institutions organized to provide a sharing of resources. Among the features of the New England Conservatory collection are manuscripts of works by Boston composers of the late 19th and early 20th centuries. . . Among those who took part in the successful capital campaign phonathons was DARLENE POPLAWSKI of Data Processing. She was not included with the other volunteers listed in the last issue. . . MARY SINGLETON of Financial Aid wasn't quite ready to respond to the cheerful 'Good Morning' she received from the handsome blue-eyed gentleman on a State House elevator a week ago. She was so taken back meeting actor, Paul Newman, in the flesh, she later related, "All I gasped was 'Hi!'" Newman was in town for the film *The Verdict* with some of the shooting being done on the hill. . . Congratulations, BOB GARNEAU of Physics and to Mrs. LINDA GARNEAU, on the birth of your daughter, Kristol. That makes two daughters for the Garneaus. . . And a salute to the Law School and Prof. RUSS MURPHY, whose proposal to host one of the CLEO Regional Summer Institutes has been accepted for the second straight year. The Law School hosted a very successful one last Summer, so successful that all 33 of the partici-

(Continued on Page Twelve)

pating disadvantaged students were admitted to ABA accredited law schools in the Fall. . . And finally, echoing the sentiments of PRESIDENT PERLMAN and CHAIRMAN HOWE, a deep thank you on behalf of the Development Department to all of the Suffolk community for the part they played in the successful Campaign for Excellence. . . See you next month. . .

#