

Suffolk University

Digital Collections @ Suffolk

Suffolk University Newsletter (SUN)

Suffolk University Publications

1990

Suffolk University Newsletter (SUN), vol. 19, no. 3, 1990

Suffolk University Office of Public Affairs

Follow this and additional works at: <https://dc.suffolk.edu/sun>

Recommended Citation

Suffolk University Office of Public Affairs, "Suffolk University Newsletter (SUN), vol. 19, no. 3, 1990" (1990). *Suffolk University Newsletter (SUN)*. 172.
<https://dc.suffolk.edu/sun/172>

This Newsletter is brought to you for free and open access by the Suffolk University Publications at Digital Collections @ Suffolk. It has been accepted for inclusion in Suffolk University Newsletter (SUN) by an authorized administrator of Digital Collections @ Suffolk. For more information, please contact dct@suffolk.edu.

Published by

The Public Relations Office
Louis B. Connelly, Director
Dawna M. Burrus, Assistant

SUN

THE SUFFOLK UNIVERSITY NEWSLETTER

Strategic Plan	2
Post Election Forum	6

Vol. 19

December 1990

No. 3

New Building Set For January Occupancy

The final touches are being applied to the University's new \$10 million building at Ridgeway Lane and Cambridge Street, and it should be ready for occupancy January 2, according to Vice President/Treasurer Francis X. Flannery.

The University will take possession of the building on Dec. 15 upon substantial completion and all that will remain to finish will be carpeting and some interior furnishings.

Scheduled to occupy the building the first week of January are the Bellotti Learning Center, the Counseling

Center, and the Communication and Journalism Department, the Dean of Students Office and the Department of Athletics.

The Bookstore, which will be located on the street floor of the four-story structure, will not take occupancy until February pending distribution of books for mid-year consumption. Perhaps the showpiece of the edifice, the subterranean gymnasium is completed but for laying the wooden floor which is scheduled to be ready for some home games this season.

As the SUN went to press, Athletic Director Jim Nelson was contemplating a Jan. 24 dedication game against Fitchburg State College and hopes to bring back a number of former Suffolk basketball stars for the occasion.

Formal dedication of the building itself is planned for sometime in the Spring.

In addition to the gymnasium, the building will house a weight and fitness center that includes treadmills, biosteps, rowing machines and nine Body Master selectionized fitness machines. There will also be locker and shower facilities.

The new structure not only gives Suffolk prominent visibility on Cambridge Street, but its architecture blends well with the historic and traditional look of the neighborhood.

(cont. on page 3)

S.U. - Madrid Link for Program

Knowledgeable Suffolk University students who already know the advantages of studying in this historic state capital will soon be able to pursue academic endeavors in Madrid, the capital of Spain and that country's most populous city.

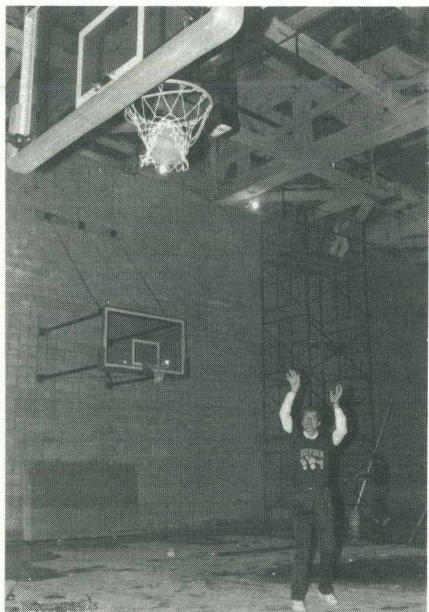
The possibility for Suffolk students to spend a semester in the historical Iberian Peninsula city that is home to some 3.5 million people recently became a reality when the University entered into a cooperative agreement with the Center for International Studies there providing for an exchange of students between the two institutions.

Under the agreement, up to 15 students will spend either the fall or spring semester of each academic year in Madrid. The students will be enrolled for 15 credits in regularly scheduled academic classes over which Suffolk will have direct control. A similar number of students from C.I.S. will also study at Suffolk's Boston campus.

Students enrolling in the program will pay Suffolk's normal tuition charges. Additional tuition will not be charged by C.I.S. The center will be responsible for assigning students to appropriate housing in Madrid. Payment of housing costs will be the responsibility of Suffolk students.

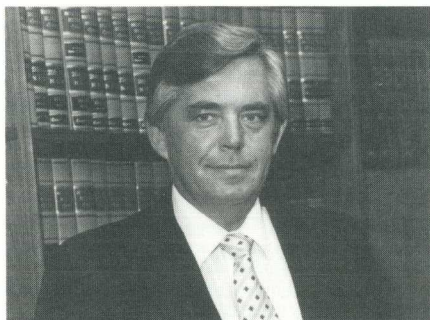
The instructional program at C.I.S. will be designed to fulfill the general educational curriculum requirements of

(cont. on page 6)



With the University's first gymnasium nearing completion and with the basketball hoops and backboards in place, Athletic Director and Head Basketball Coach Jim Nelson took the first shot and as you can see it swished through.

President Sargent Discusses a Strategic Plan For Suffolk University



(President Sargent shares some thoughts on Strategic Planning at Suffolk University)

Anyone who has read recently published articles about higher education in the United States cannot come to any conclusion other than that all colleges and universities will be facing great fiscal and programmatic challenges in the coming year and probably for the whole decade of the 1990's.

The issues discussed by leaders in higher education range from demographics - there will be fewer students graduating from high school for at least two more years - to the possibility of reduced federal and state funding of financial aid. Other pressures on higher education include public resistance to tuition increases while institutional costs are skyrocketing.

As president of Suffolk University, I believe it is our joint responsibility as faculty, administrators, trustees and friends of Suffolk University to examine the challenges facing our University at this time and in the foreseeable future. After careful consideration of our strengths and weaknesses, we must develop a responsible strategic plan for the coming decade to enable Suffolk University not just to flourish but to make a substantial contribution to the quality of life in the Greater Boston community and beyond by providing the best educational and community service programs of which we are capable.

As many readers of the SUN are aware, to overcome the fiscal and programmatic challenges facing the University

in the 1990's and to take advantage of the opportunities available to us, I have charged the academic deans, the other University deans and vice presidents and my staff, and through them, all of the members of the Suffolk University community, to assist me in preparing a strategic planning statement. This statement will enable us to articulate a shared vision of Suffolk University's future, together with plans and strategies to make that vision a reality to faculty, trustees, staff, students, parents, alumni and the general public.

It is my understanding that at this time initial steps are being taken by all segments of the University toward the development of a list of goals for Suffolk University and recommendations as to how these goals can be achieved. I am pleased that good progress is being made on this project. Up to this point in our deliberations, most of the work has been done by faculty and administrators. As we move ahead with the strategic planning process, it is expected that there will be more trustee, alumni and student participation.

It is my hope that a completed report will be available for my use on or about April 15, 1991. While I refer to this initial report as a "completed" report, I must tell you that I view strategic planning as an on-going process. I expect that the report will be reviewed annually and modified where appropriate as progress is made toward the goals of the report and as circumstances change.

I expect to use the recommendations in the report as the starting point in my articulation of Suffolk University's mission. Some examples of the kinds of issues and "themes" which will probably need to be addressed in planning for Suffolk University's future include:

- Suffolk University's commitment to diversity in all parts of our community - students, faculty, staff, trustees.

- Ease of access to Suffolk University's programs - adequate provision for evening and part-time students.
- Suffolk University's commitment to provide adequate facilities for educational programs, faculty and staff accommodations, student housing and student activities.
- Given Suffolk University's mission and the trend toward "globalization", an appropriate policy for recruitment of international students needs to be developed.

In summary, I believe the preparation of a strategic plan for the University is absolutely vital to the continuing successful development of Suffolk University. I deeply appreciate the thoughtful attention which I know each of you are giving to this undertaking. Thank you for joining me in this exciting opportunity to shape the Suffolk University of the future. ○

David J. Sargent



HAPPY HOLIDAYS!



Tuerck Study Says State Could Cut \$500 Million From Deficit

Massachusetts could cut \$500 million from the state deficit without reducing human services according to a study conducted by Suffolk University economics professor David G. Tuerck and a research team.

The three-month study, entitled "Restructuring Human Services: Toward a Family Service Center System," also concludes that the state could eliminate \$1.5 billion in appropriations from the state budget, and 8000 positions from state payrolls.

Conducted by the University's Economics Department Human Services Study Team, the report says the state could realize these savings by a restructuring and consolidation of human services.

Tuerck called for the replacement of the existing human services delivery system, which depends upon some 1200 private providers to carry out human services programs, and instead instituting "a system of for-profit, fully capitalized, taxpaying family service centers that would deliver services at a much lower cost with at least as much effectiveness as existing providers deliver them now."

The system, called a "Family Service Center," would replace many of the state offices and private providers that make up the present human services delivery system.

"Under the FSC system, the state would issue 'welfare vouchers' to individual welfare clients, who would use the vouchers to obtain services from any of some 40 FSCs located around the state," Tuerck explained.

"In exchange for the vouchers, the FSC will provide the cash grants to which their clients are legally entitled and contracts with third parties to provide certain non-cash welfare services," Tuerck said.



Tuerck

These services include child and elder day care, outpatient clinic care, shelter for the homeless, youth counseling and others."

Tuerck said such a system would reduce the cost to the state of providing human services by consolidating many services now provided by many different providers and by creating competition between FSC's for welfare vouchers.

Though a for-profit entity, the FSC would serve the community as a whole and its services, particularly child and elder day care and certain medical care, would be open to and regularly used by members of the general public, he said.

The study team was made up of Suffolk University faculty and students. ○

New Building *(cont. from page 1)*

Completion of the project culminates a long and patient effort by the University and its leaders to win approval for the construction of the building. It's been 23 years since Suffolk acquired the old Stop & Shop property for expansion. A Supreme Judicial Court decision initially stopped it until an agreement was worked out with the Beacon Hill Civic Association more than two decades later.

For Jim Nelson and his staff, the gymnasium represents a dramatic breakthrough as Nelson prepares to utilize the first home court in the school's 84-year history and hopes it helps point the basketball program in an up direction. ○

"The FSC also provides, under one roof, services that welfare clients currently obtain at far greater cost from numerous providers.

Suffolk to Host Economics Conference

Suffolk University will be the host institution for the second annual convention of the Congress of Political Economists (COPE) to be held January 9-12 at the Boston Park Plaza Hotel.

Saroj Sawhney, professor of economics at Suffolk, co-founded COPE International in 1989 with Dr. Tej S. Saini, professor of economics at Bloomsburg University in Bloomsburg, Pennsylvania.



Sawhney

Sawhney says COPE International, a non-profit organization with worldwide membership, was formed to provide a forum for scholarly discussion on such matters as industrial capitalism, socialism and socio-economic systems.

She said that COPE International was founded because no current system of social organization addresses the issues of economic democracy. "We are trying to design a system that will provide a balance between the existing practices of socialism and market capitalism," she said. She would like to bring together people from around the world to discuss issues pertaining to economic democracy.

The second COPE convention will focus on issues of economic justice, personal freedom and human equality. The convention will include an evening of international entertainment, cuisine, employment exchange, and publishers' exhibits. ○





Personnel



A Tax Break On Grad Courses

Some good news from the IRS! Recent federal budget legislation changes the way in which graduate courses taken by employees are taxed. Effective January 1, the first \$5250 of graduate tuition will not be taxed. Presently the entire Law School tuition is taxed, while graduate tuition in the Colleges is taxed if registration is not accomplished on a "stand-by" basis. The regulation which allows the first \$5250 of graduate courses to be tax free will expire on December 31. If the regulation is not extended courses will be taxable again in 1992.

The new regulations do not affect undergraduate courses for employees, dependent children or spouses. These will remain free from taxation. Neither does the regulation affect graduate courses for dependent children or spouses. The tuition value of these courses will remain taxable to the employee parent or spouse.

If you are taking graduate or law courses in 1991 and have already submitted an "Application for Tuition Free Courses," you do not have to resubmit the application. If you are planning to take graduate courses in 1991 with tuition value in excess of \$5250 you should check with the Payroll Office to assure that the proper amount in taxes is deducted from your check.

This is also a good time to remind you that if you, your spouse or your dependent children are taking courses at Suffolk, you must submit an "Application for Tuition Free Courses" every semester. Forms are available from the Human Resources Office. ○

Health Insurance Costs to Increase

The rapidly escalating costs of health insurance require that Suffolk make several changes in the health program. As of January 1, contributions for health insurance will increase. The monthly contribution for individual coverage will increase from \$20 to \$40. The monthly contribution for family coverage will increase from \$40 to \$80. Remember, since contributions are made on a pre-tax basis, your salary will not be reduced by the total contribution but rather by approximately \$29/mo. for individual coverage and \$57/mo. for family coverage. The monthly contribution for three-quarter time employees will be \$60 for individual and \$120 for family, while for half-time staff it will be \$80 for individual and \$160 for family.

The University's health insurance benefit remains very competitive. Estimated total cost of the health insurance plans in this fiscal year are \$2.5 million. Employee contributions will be \$270,000 or about 11 percent of the total plan cost.

Those on the Hancock Preferred plan, pay special attention to the following benefit changes effective January 1:

- Prescription Drug Payment via the PCS card — you will pay \$5 per person per prescription.

- Office visits to the Network Physician — you will continue to pay \$5 at the time of the visit, but you will be billed by the provider for 10% of the negotiated discounted rate for any procedure performed in conjunction with an office visit. For example, you will be billed for tests, x-rays or minor surgery provided by the physician.

- Other Network Services — X-ray and lab, inpatient hospital and emergency visits, among others, will be paid by Hancock Preferred at 90% of the negotiated discounted rate. You are only responsible in these cases for the 10 % difference between the negotiated

discounted rate and the Hancock Preferred payment; the provider will bill you for these amounts.

- For Non-Network coverage, that is if you opt to see a medical care provider not listed in the Network Directory, the coinsurance amount, or the percentage you pay of the bill after the deductible has been met, will increase to 30 %. An individual using non-network providers will be responsible for the first \$250 worth of charges after which the Hancock Preferred plan will pay the remaining 70 % of the allowable expenses. ○

Staff to Resume Development Programs

After a December hiatus, staff development programs will resume in January. The series begins with a program for administrative staff on "Motivation Through Effective Delegation." Realizing that the selection and assignment of responsibilities is a key element in obtaining top performance from staff and in making the best use of time, this workshop explores the link between delegation and motivation. This program will take place on Wednesday, January 23 from 9:30-1:00 in S-521.

"Communicating Under Pressure" is designed for support staff who work in service oriented offices. This program explores attitudes about customers, how these attitudes affect the nature of the services provided and suggests ways to deal with difficult and angry individuals. This workshop is scheduled for Tuesday, Jan. 29 from 1:00-4:30 in S-521.

Jeffrey West, CPA, will facilitate a noon-time program on "Debt Management/How to Save" on Wednesday January 30 in S-521. This program is designed for the "beginning" saver. Various savings and financing vehicles will be discussed and evaluated. ○



Faculty Notebook



MORRIS McINNES of Accounting has obtained a grant of \$8500 from the Boston office of KPMG Peat Marwick. The grant will support the work of the Boston Accounting Research Colloquium during its 1990-91 seminar series which kicked off on Dec. 7 with a program featuring Prof. Cheryl Lehman of Hofstra University and Tony Tinker of Baruch College.

CLAS sabbaticals have been approved by the Board of Trustees for the following faculty: **BARBARA ASH** of Education, **GLORIA BOONE** of Communication and Journalism, **PETER BURN** of Biology, **ROBERT FOX** of English, **FRED MARCHANT** of English and **ALEXANDRA TODD** of Sociology.

SHAHRUZ MOHTADI of Economics presented a paper "An Economic Analysis of Racial Inequality" at the Association for Bahai Studies Conference on Models of Racial Unity in Atlanta, Georgia in November.



FRANCES AMATUCCI of Management attended a workshop conference on "Leadership and the Management of Strategic Change" Dec. 11-14. Held at Robinson College in Cambridge, England, the conference was sponsored by the Strategic Management Society and the Cranfield School of Management.

JOHN O'CALLAGHAN of Government has been retained by McGraw-Hill Publishing Co. to review a 900-page manuscript for a new constitutional law text soon to be published.



HENRY L. MULCAHY of Biology has been appointed to the board of councilors of the Northeast branch of the American Society for Microbiology. He recently chaired a microbiology education symposium and workshop at the regional meeting held at the University of New Hampshire.

THOMAS FINN of the Law School. He has been selected to serve on a child fatality multi-disciplinary review panel for the State of Rhode Island stemming from two recent deaths. He also wrote an article "Child Witness Practice in Child Abuse Processing" for the most recent *Suffolk University Law Review*.

BERNARD V. KEENAN, Law School. He served as a panelist for a Massachusetts Bar Association presentation entitled "Recent Developments in Mass. Subdivision Control Law."

FRAN BURKE of Public Management. The Women's Caucus for Political Science at the American Political Science Conference in San Francisco inducted her into the Honor Roll of Mentors of Distinction for 1990, one of only 12 honored nationwide. She was nominated by MPA grads. Burke has also published a paper with Amy Black of Claremont-McKenna College in California on "Ethics Productivity." It is carried in *Public Productivity Review*.

JOHN C. BERG of Government. Pi Gamma Mu, the International Honor Society in Social Sciences, has awarded him a special citation from its international president. The honor society cited Berg for continuous chapter leadership.

He will present a paper, "Representation of the Periphery in the U.S. Congress: The Cases of Women, African Americans, and the Labor Movement," at the International Political Science Association's World Congress in Buenos Aires in July.

Prof. Emeritus **STANLEY VOGEL**, English. He's back from his annual trip abroad, this one a two-week trek to Tunisia, which included touring the ruins of ancient Carthaginian and Roman cities from the Mediterranean to the Sahara Desert. He found the temples, amphitheaters, baths and mosaic floors comparable and in some cases finer than those in Italy or Greece. Tunisia, he noted, seemed more progressive and economically successful than other Arab countries. Vogel also spent two weeks in France and Belgium.

AGNES BAIN, Government. She took part in two recent panel discussions at the University, one a pre-election discussion featuring radio talk show hosts, and the other a post election wrap-up of the 1990 campaign that featured a number of media and political analysts.



DAVID PFEIFFER, Public Management. He's the recipient of a Whitney-Carnegie Award from the American Library Association to complete his project, "An Annotated Bibliography of Disability Studies."

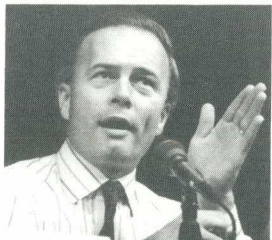
NANCY STOLL, Dean of Students - She was a presenter at the American College Union's international conference in November discussing "Women in Higher Education: Shattering the Glass Ceiling."





Pundits Perk Post-Political Parley

Some of the area's top media personalities and political analysts held a post election political parley before a packed audience at the C. Walsh Theatre Nov. 20.



Kirby Perkins is emphatic unsuccessful gubernatorial quest of Boston University President John Silber and his controversial campaign.

Panelists were John Henning of WBZ-TV Channel 4, Kirby Perkins of WCVB-TV Channel 5, Joe Day of WHDH-TV Channel 7, Judy Jarvis of WLVI-TV Channel 56, David Kuhn of WGBH-TV Channel 2, Michal Regunberg, press secretary to John Silber, Dan



Peter Meade ponders panelist response



Michal Regunberg & Ben Taylor share smiles



John Moffitt explains executive editor of the Boston Globe, Editorial Chief Jeff Jacoby of the Boston Herald, political pollster Gerry Chervinsky, and Suffolk Gov't Prof. Agnes Bain.

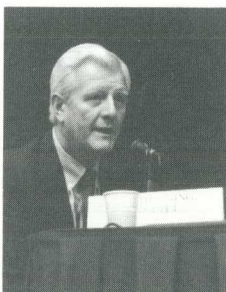
The fast moving 90-minute program was kept rolling by Mead, who pin-pointed panelists for reactions to post election questions throughout.

Suffolk President David J. Sargent welcomed the guests in opening remarks. A reception in the Munce Conference Room followed the program, which was put together by Jack Fitzgerald of Regan Communications. ○

Payne, a political analyst, Stan Hopkins, news director at WBZ-TV Channel 4, John Moffitt, campaign manager for Gov. Elect William Weld, Ben Taylor,



Judy Jarvis gives point of view



John Henning has his turn

Suffolk Students Study West End

Twenty-two Suffolk students enrolled in a sociology class of Prof. Geraldine Manning are involved in a project examining the history of Boston's West End.

The students, all Archer Fellows from the University Honors Program, are taking the course as part of a challenge seminar required of Archer Fellows.

The students, who have coordinated the class with the West End Historical Society and the West End Branch Library, have interviewed a number of former West End residents as well as life-time West End resident Rosalie Warren, a senior citizen Suffolk graduate.

They have also viewed some 70 hours of tapes at the West End Branch's video library and eight of the students, so infatuated with the project, are doing their own independent study.

The West End fell victim to urban renewal in the fifties with homes razed and residents left homeless, many moving to bordering communities of Boston.

"It is an emotionally charged subject and many of the students have thrown themselves into the project," said Prof. Manning. "Some, unfamiliar with the West End history, were appalled and horrified at the demolition films," Manning said.

Also closely involved is Suffolk CLAS Assistant Dean David Robbins, a member of the West End Historical Society, whom Manning credits with playing a "crucial role in getting the project started." The one credit course is entitled "Sociological Exam of Boston Neighborhoods" and also includes a historical look at the North End and Charlestown.

The West End Historical Society was formed in 1987 to preserve the memory of the West End. ○

S.U. - Madrid *(cont. from page 1)*

Suffolk University and other U.S. institutions, while offering prerequisite lower division courses in Business Administration/Management and other elective courses in Liberal Arts and Sciences.

Students will be offered a comprehensive two-day orientation program upon arrival in Madrid that will be underwritten by C.I.S. The orientation sessions will focus on Spanish culture and on the history of Madrid.

In the fall semester of each academic year, a Suffolk professor will accompany the students to Madrid. The faculty member will teach courses at C.I.S.

Suffolk is also in the process of appointing a resident director who will oversee the administrative aspects of the program. The resident director, who will be drawn from the ranks of the regular Suffolk faculty or administration, will be based in Spain. ○

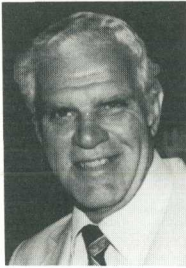
- Richard Preiss -

- Shannon Johnson -



Potpourri

by
**Lou
Connelly**



Suffolk's Bookstore, expected to occupy its new first floor quarters in our new Ridgeway building in early April, will be expanding its services, selling best seller books, cards, and gifts, according to its manager **Eric Cressman**. And one of the things Cressman has in mind is a section of books by Suffolk faculty/staff authors. We have a number of authors on our faculty including **Ken Greenberg** of History, **Margaret Weitz** of Humanities, **Marguerite Dennis** of Enrollment Management, **Alexandra Todd** of Sociology, and **Bob Johnson** of English to name just a few. Any Suffolk author who would like to be included in the section should submit a list of pertinent books...

Some years back, History Prof. **Ed Hartmann** compiled a list of alumni authors which included **Nancy Zaroulis**, who won the plaudits of **Jacqueline Onassis** for her book with a Lowell background, **Jim Bamford's** *Puzzle Palace* on U.S. security, **Andy Coburn**, who's written a number of mysteries, **Lawrence Quirk**, a chronicler of many movie star biographies and **Jack London**, who wrote on his travels through Australia's bush. The Sawyer Library houses such authors works...

The University has been the focal point for a number of media presentations this semester. In addition to the star-

studded post election panel, radio talk show hosts **Gene Burns** and **Janet Jeghelian** of WRKO and **David Brudnoy** discussed the election earlier and the Economics Department sponsored a debate on the tax rollback/Question Three between WBZ's **Peter Meade** and CLT's **Barbara Anderson** with Channel 2's **Christopher Lydon** serving as moderator. And before that, the department presented a talk by Lt. Gov. **Evelyn Murphy** discussing her withdrawal from the gubernatorial race and the state's fiscal crisis...

Incidentally, two of Suffolk's energetic people, **Dave Tuerck** of Economics and **Marguerite Dennis** of Enrollment Management appeared as guests on the Brudnoy Show a week apart. Tuerck (see page 3) also appeared on **George Merry's** Channel 68 political show "Affairs of State"...

For the first time, the number of women entering Suffolk Law School has equaled that of men, according to Assistant Dean **John Deliso**. "It's now 50-50. It had been hanging a couple of percentage points apart for some time," Deliso noted of the 520 students. It's 52% women in the day division, 48% evenings...

Condolences to Journalism's **Nadine Mironchuk** on the death of her mother, **Beatrice Mironchuk** of Chelsea, in November...

A welcome back to **Gail Brickley**, new assistant registrar in the Law School. Gail was a long-time assistant to **Mary Hefron** in the College Registrar's Office and returns to us from Winchester Hospital where she was a coordinator of volunteers...

Sharon Artis, presidential assistant, recently returned from a tour of Egypt and five countries in West Africa. She plans an informal presentation on her trip within the next few weeks...

And **Coleen Estrada** of the President's Office has moved across the hall at One Beacon Street to become administrative assistant to Marguerite Dennis. Coleen succeeds **Maria Gautreau**, a new bride who moved to Memphis, Tenn...

Yes, that was **Bill Murray** of *Saturday Night Live* fame you saw coming out the Archer Building. He was in town to support **Kristin Linklater** and The Company of Women who were performing at the C. Walsh Theatre...

Don Levitan of Public Management, recently nominated for inclusion in *Who's Who in Finance and Industry*, was happy to learn that ASPA's *Handbook on Public Budgeting*, of which he is a contributor, has been translated into Chinese...

Marjorie Hewitt of Student Activities has been chosen co-editor of the Massachusetts Association for Women Deans, Administrators and Counselors Newsletter...

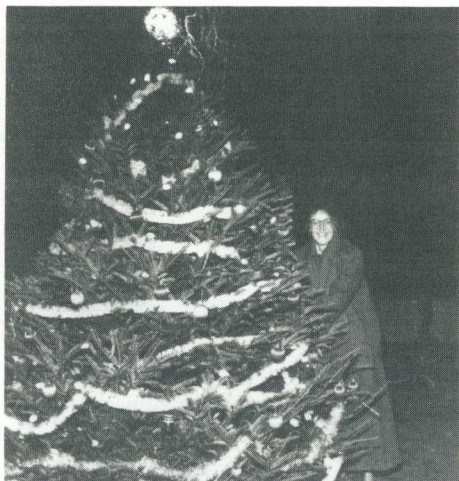
Contratulations to **Donna Schmidt** of Student Activities. She received the Outstanding Staff Programmer Award for 1990-91 from the National Association for Campus Activities and from the Association of College Unions - International she received the Distinguished Service Award for ACU-I Region I...

M.L. Morehouse of the Law School has been elected president of the Evening Division Student Association succeeding **Gail Mansfield** of Institutional Advancement... **Lisa Vigliotta** of Human Resources has been voted vice president...

The annual fall phonathon wound up with more than \$260,000 pledged according to **Gail Mansfield** and should reach its goal of \$290,000 come spring when the phonathon resumes...

Marie Tangney of the Moot Court has been appointed co-chair of the Legislative Committee of the National Federation of Paralegal Associations...

SOM's **Myra Lerman** has been named to the board of the International Arts for Peace of Cambridge, which was recently selected to take part in Exchange Project, a unique nationwide program sponsored by the Peace Development Fund of Amherst, Ma...



"LIGHTS ON," says Dean of Students **Nancy Stoll** as she pulls switch lighting Suffolk's Christmas tree.

Students celebrating the 10th anniversary of the Holiday Tree Lighting Ceremony on the evening of Dec. 6. with a number of invited alumni from the past decade were on hand as Dean of Students **Nancy Stoll** flicked the switch to light the tree. Among guests in attendance was former Activities Director **Duane Anderson**...

Let's hope **Ted Marshall** of Physics is back soon. He's at home recuperating from recent bypass surgery. Cards can be mailed to him at 87 North St., Box 1021, Duxbury, Ma 02331...

Robin Hill, the locksmith at Suffolk University, is recuperating from major back surgery performed on Nov. 15. You can drop her a card at 17 Washington St., Apt. 415 in Malden, Ma 02148...

Talk about a Suffolk family affair! **Michael Tobin** and sister, **Elizabeth**, who graduated from the Law School in

June, successfully completed the July bar exam and will join their father **Richard H. Tobin J.D. '51**, brother **Robert J.D. '82**, and uncle, **Albert G. Tobin J.D. '50** in the Roslindale firm of Tobin & Tobin...

Fred Wilkins of English was the big winner in the annual Charitable Giving Campaign drawing. He won a weekend for two at the Hotel Meridien. Another winner was Associate Law Dean **Charles Kindregan**, who won a University captain's chair, and team leader **Steve Spitzer** of Sociology won a dinner for two at the Bay Tower Room...

As the campaign draws to a close, some 42% of the University faculty and staff have contributed \$23,235 to three charitable organizations: 58% to the United Way of Massachusetts, 22% to Community Works and 20% to Oxfam America. **Dan McDonald** reports that additional contributions will be accepted in the Human Resources Office until Jan 2...

Suffolk's 1990-91 hockey team is off to a fine start, posting an 9-2 record at the Christmas break with the two **Brians** from Somerville, **Horan** and **Gruning**, leading the way for **Bill Burns'** skaters. It's Burns first season as head coach after two seasons as assistant mentor...

Kim Whitener, general manager of the C. Walsh Theatre, reports that the holiday treat *A Mall and Some Visitors* by the Beau Jest Moving Theatre Company is being presented Dec. 20-22 at 8 p.m., and while tickets are priced at \$12 for orchestra and \$10 for balcony, Suffolk students, faculty and staff will receive a 50% discount on tickets, one per I.D...

Education and Human Services will hold a workshop, *Healing Life's Hurt Now: Empowerment for Caregivers*, Feb. 8 at the Days Inn in Newton Lower Falls. **Roger J. Radley**, author and education consultant, will be the speaker for the program which deals with daily stress and job burnout...

Happy 80th birthday to a special lady - Miss **Dorothy McNamara**, long-time S.U. bursar and alumni director, who reached that milestone on Dec. 9 and gets around as well as ever. She was an invited guest to the two reunions recently held by the Law School Class of 1950 and the CLAS/SOM classes of 1949 and 1950...

The Psychology Department will organize the sixth Adult Development Symposium in conjunction with the Society for Research in Adult Development. It will be held next July with developmental psychologists from throughout the world expected to attend...



HONORED BY LAW ALUMNI - Special Justice **Peter J. Panuthos** (second left) and Trustee **Robert B. Crowe** were honored at the Law Dinner. Left is **Dennis Duggan**, president of the Law Alumni Association, and Dean **Paul R. Sugarman** of the Law School is at right.

Suffolk trustee **Bob Crowe** received the 1990 Outstanding Service Award and Judge **Peter J. Panuthos**, a special trial justice for the U.S. Tax Court in Washington, D.C., won the Outstanding Achievement Award at the annual Law School alumni dinner before more than 600 guests at the Park Plaza. Crowe has a bachelors degree and juris doctor degree from the Law School while Panuthos got his law degree in 1969...

Have the happiest of holidays and see you on the trails at Loon Mountain...

