

Suffolk University

Digital Collections @ Suffolk

Suffolk University Newsletter (SUN)

Suffolk University Publications

1995

Suffolk University Newsletter (SUN), vol. 23, no. 3, 1995

Suffolk University Office of Public Affairs

Follow this and additional works at: <https://dc.suffolk.edu/sun>

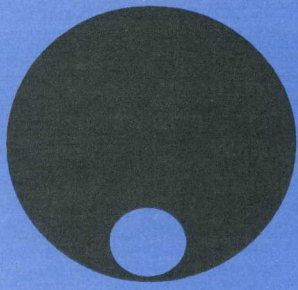
Recommended Citation

Suffolk University Office of Public Affairs, "Suffolk University Newsletter (SUN), vol. 23, no. 3, 1995" (1995). *Suffolk University Newsletter (SUN)*. 192.
<https://dc.suffolk.edu/sun/192>

This Newsletter is brought to you for free and open access by the Suffolk University Publications at Digital Collections @ Suffolk. It has been accepted for inclusion in Suffolk University Newsletter (SUN) by an authorized administrator of Digital Collections @ Suffolk. For more information, please contact dct@suffolk.edu.

Published by

Public Relations/Human Resources
Louis B. Connelly, Editor
Kristin M. Nelson, Design



SUN

THE SUFFOLK UNIVERSITY NEWSLETTER

Coughlin
to Retire 2

Tuition
Increase 3

Vol. 23

No. 3

February 1995

Suffolk Will Host International Conference on Eugene O'Neill May 11-14

Suffolk University will be the setting for another international conference on playwright Eugene O'Neill, which is entitled "O'Neill's People," and will be held May 11-14. English Department Chair Frederick C. Wilkins will be co-host along with the Eugene O'Neill Society.



Wilkins

This will be the third such conference to be held at Suffolk. Two others were held in 1984 and 1986 and were extremely successful attracting attendees from all over the

world. This year's conference will be no exception as participants have registered from Russia, England, China, France and India.

Barbara Gelb, co-author of a definitive biography on Eugene O'Neill entitled *O'Neill*, will give the opening address. Bronze medals will be awarded to a number of individuals including Gelb and her husband, Arthur Gelb of the New York Times, director Jose' Quintero and actors Jason Robards and Geraldine Fitzgerald.

There will be a number of paper presentations, discussion panels and theatrical presentations during the four-day conference. "What we are intending

to offer is a mix of academic and theatrical experiences," explains Prof. Wilkins. "It is our fervent hope that this conference will be inviting to a wide variety of O'Neill lovers."

The theatrical presentations will include a performance in Russian of Eugene O'Neill's most famous play, *Long Day's Journey Into Night*, by the Gogol Theatre of Moscow. According to Wilkins, "They put a Slavic spin on the O'Neillian ball that is both startling and ultimately deeply moving."

In addition, there will be presentations of the first staged reading ever of O'Neill's early play, *The Personal Equation*, by members of New York's Actors Studio; a solo show by actress Marla Collins on the women in O'Neill's life, *The Lovers and Others of Eugene O'Neill*; and

(cont. on pg. 2)

Mary Ferris Elected Alumni Trustee

Mary R. Ferris of Winchester, a past president of the General Alumni Association, has been elected an alumni trustee for the College of Liberal Arts and Sciences.

Ferris, an auditor for the Department of the Treasury in Boston, won a seat on the board after defeating Ralph C. Ferragamo, B.A., '64 of Barnstead, N.H., founder and CEO of SoftLine Information in Stamford, Conn., and Roland E. Vanaria, B.S. '70, of Hopkinton, a dentist with a private practice in Newton.

The Board of Trustees confirmed Ferris' alumni election to a three-year



Ferris

term at its February meeting. She succeeds outgoing CLAS alumni trustee Anthony F. Farma, B.S. '77, M.Ed. '82.

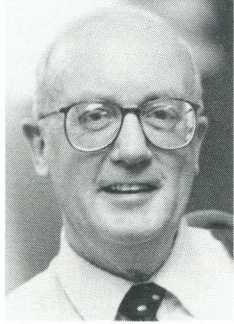
Mary Ferris has a long association with Suffolk University, notably in alumni activities. She received her bachelor of arts degree Magna Cum Laude in 1973. She was an alumni association director for nine years and is a former member of the Suffolk University Alumni Council.

Active in her community, she is an elected town meeting member in Winchester, president of the Winchester Friends of Recreation and Community Education, trustee and treasurer of a 319-unit condominium complex and recent chairperson of the Treasury Department's Native American Committee.

Board Chairman James F. Linnehan, in announcing Ferris' election, praised her commitment to Suffolk University. "Mary Ferris has had a long and dedicated association with the University both as a day and evening student, as an active alum and as someone who worked at the University and is familiar with its history. All of these attributes should make her an asset to the board." ❖

Admissions' Bill Coughlin to Retire in June After 29 Years of Service

William F. Coughlin, long-time director of admissions for the College of Liberal Arts and Sciences and School of Management, has announced his retirement effective June 30.



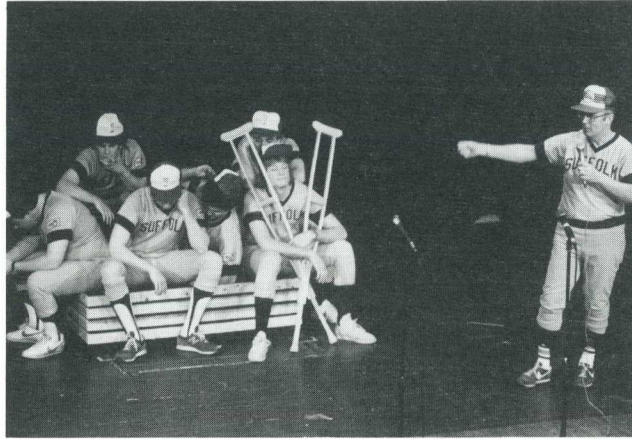
Coughlin, who turned 65 in November, is completing 29 years as a member of the University's administration. One of Suffolk's most popular personali-

ties, Coughlin joined Suffolk in 1966 after serving as director of guidance for the Canton School System for five years. He also taught English and social studies at Sharon High School and Putnam, Conn. High School.

An honor graduate of the College of the Holy Cross, who holds a master in education degree from Boston University, Coughlin directed admissions during a period of great growth for Suffolk in the 70s and 80s. Personable with a rich sense of humor, Coughlin worked effectively in recruiting students and is well respected by colleagues in the admissions and guidance counseling fields.

"When I came here in 1966 I was the only administrator in Admissions," Coughlin recalled. "I was in charge of both undergraduate and graduate admissions. Back then two-thirds of the enrollment were male. Today we have slightly more women than men enrolled."

Coughlin pointed out that person to



Coughlin and Crew in a Springfest Skit.

person contact was the big factor in recruitment in the late sixties and seventies long before advertising and marketing came into play.

"I was fortunate to have a solid staff," Coughlin observed. "Ed Saunders did a terrific job recruiting, particularly from the Catholic high schools and later Nancy Fine and Joe Walsh joined us to strengthen the staff."

Coughlin takes particular pride in the fact that the 1981 freshman class numbered 613 students, still a record for Suffolk admissions.

"Reviewing the years, I'd say the thing that pleased me most is that we responded to people promptly and complaints were few, and that's a tribute to the staff, both administrative and secretarial," Coughlin pointed out.

Coughlin, who over the years served as a "toastmaster general" for a number of Suffolk activities, says the thing that he will miss most is the day to day contact with people in the University community.

"As for the work, what I'll really miss is the interview. That's admissions with person to person contact. I loved talking with potential students."

A long-time jogger and bicyclist, Bill will keep busy in retirement hoping to do volunteer work in the schools and is planning a trip to Ireland. He'll also spend a lot of time with wife, Marion, and his children. Three of his daughters, Sue Coughlin, Maureen Mulvey and Joan McGreal, attended Suffolk and Maureen and Joan married Suffolk graduates.

Marguerite J. Dennis, dean of enrollment and retention management, lauded the veteran administrator.

"It would be impossible to count the number of students that Bill Coughlin interviewed and counseled over his 29 years as director of undergraduate admission at Suffolk University," she said. "Throughout all this time, Bill never lost the personal touch that made the admission process at Suffolk a pleasant experience. In a time when many admission offices assumed an inflexible and rigid posture with students, Bill never forgot that the student is our most valued customer. His kindness and wit will be missed." ❖

O'Neill *(cont. from pg. 1)*

an O'Neill one-act monodrama, *Before Breakfast*, performed by actress Mary Wadkins.

"Eugene O'Neill is the only American playwright to receive the Nobel Prize for literature," pointed out Wilkins. "These conferences are an integral part of keeping O'Neill scholars in touch with one another in a personal way, creating opportunities for new and innovative scholars to present their work on O'Neill, and offering an interplay of old and new ideas which help to keep O'Neill both international and universal." ❖

CLAS to Offer Its First Ph.D. Program

Suffolk University will institute its first doctoral program in the College of Liberal Arts and Sciences when it introduces a Ph.D. degree in clinical psychology beginning in the Fall semester.

The program will lead to a doctor of philosophy degree after five years of full-time study, reported Prof. Jack Demick, chair of the Psychology Department. Degree requirements include completion of 96 academic credits; practicum experiences; teaching assistantships in an undergraduate psy-

chology course during the first three years; masters thesis; comprehensive examination, doctoral dissertation; and internship.

Based on the "Boulder Model" of clinical psychology, it will emphasize that students acquire both strong scientific research skills as well as strong practitioner skills.

Dean Michael R. Ronayne said "to establish this degree as our first step into the Ph.D. arena is a positive and natural move for the University."

CLAS has also expanded its graduate course offerings to include a master of science in international economics and a master of science in political science. ❖



S.U. Received \$650,000 in Gifts And Bequests in December

Suffolk University received nearly \$650,000 in planned gifts and bequests in December, reports Diane Spence, director of special gifts. All were appreciated property gifts.

Mrs. Margaret Geraghty of Milton deeded to the University seven condominium units located at 14-16 Grove Street



Mrs. Margaret Geraghty (second from right), son Thomas Jr., niece Anne Geraghty, and President Sargent.

on Beacon Hill. The property has been valued at \$420,000. Mrs. Geraghty's son, Thomas J. Geraghty Jr., (B.S. '86), and a nephew, Patrick Geraghty, (B.S. '92), are Suffolk graduates.

According to Spence, the University plans to sell the property and the proceeds will be used for the purposes designated by Mrs. Geraghty: to benefit the Irish Studies Program, establish a scholarship fund for CLAS and SOM undergraduate students, establish an endowed book fund at the Sawyer Library and support the new Law School building project. These gifts are all made in the name of Mrs. Geraghty and her late husband, Thomas J. Geraghty.

In addition to the Geraghty gift, Mrs. John Gifford of Duluth, Minn. established an endowed scholarship fund in memory of her husband, John A. Gifford, a 1936 graduate of the Law School. Income from this fund will provide scholarship assistance to Law School students.

Suffolk also received a gift of 55 series E Savings Bonds from the estate of

Mary Inguanti of West Roxbury. Her bequest, worth \$125,000, was used to establish the Santi and Mary Inguanti Scholarship Fund, which will provide financial aid to Law School students. ❖

Tuition Rates Set for '95-96 Academic Year

Suffolk University's Board of Trustees has approved a 6.6 per cent increase in its undergraduate full-time tuition for the 1995-96 academic year. The action raises tuition to \$11,300 and is the lowest percentage increase in 21 years.

The board voted the increase at its February meeting upon the recommendation of President David J. Sargent, Vice President/Treasurer Francis X. Flannery and the Board's Finance Committee.

President Sargent, in announcing the rates to the University community, said that Law School tuition will increase 7.04 per cent to \$16,580 for Day Division students and 7.02 per cent to \$12,436 for the Evening Division.

Sargent said that full-time graduate tuition in the College of Liberal Arts and Sciences and the School of Management will have increases ranging from 4.90 to 9.47 per cent. There will be no increase in tuition for the full-time graduate MPA program.

"While the University recognizes the impact of these increases upon students and parents, they are necessary if we are to continue to offer a high quality education to our students," Sargent said.

"Overall tuition at Suffolk University continues to be among the lowest of any independent university in the region," Sargent pointed out. "Suffolk University remains committed to its mission to provide a quality education at an affordable cost." ❖

8 Turkish Grad Students to Study at Suffolk

The Center for International Education has announced that the Turkish Ministry of Education will sponsor a group of eight students to study English as a foreign language at Suffolk University.

The participants, who arrived in mid-February, will continue with the English courses through August.

The Center for International Education also announced that Suffolk has received two USAID grants for training foreign professionals. The grants cover costs of instruction and internship for two bank executives from the Czech Republic and Slovakia, coming here under the auspices of the Partner-

ship Training Project for Central and Eastern Europeans.

According to Marguerite J. Dennis, dean of enrollment and retention management, the training will include information on new bank product development, securitized debt issues, structured financing, risk management and private banking services.

"The project is designed to provide training to Central and Eastern Europeans who can help lead their countries through current political, economic and social transitions," Dennis pointed out. Shahriar Khaksari, chairman of the Finance Department, will direct the training program. ❖

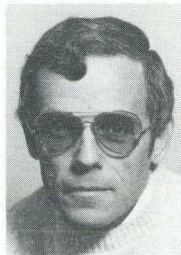




Newsmakers

John Pagliarulo, captain University Police. He's still receiving accolades for his heroic revival of 70-year old Edward O'Donnell who had collapsed outside the Sawyer Building on Nov. 30. The Board of Aldermen in Pagliarulo's hometown, Somerville, presented him with a citation Jan. 26 "in recognition of his prompt, timely and professional assistance responding to a crisis situation in reviving a heart attack victim thereby saving his life." Pagliarulo, on hand with his family, still communicates with O'Donnell. They plan to get together in the Spring.

Kenneth F. Garni, director of the University Counseling Center. The Council for the National Register of Health Service Providers in Psychology has awarded him the 20th Anniversary Platinum Certificate for two decades of listing in every edition since its inception. The National Register was created to identify licensed psychologists who meet its definition of health service provider.



Clarence Cooper, Public Management. He was the kickoff speaker, presenting part one of an evaluation of the Ryan White CARE Act in Metropolitan Boston to the HIV Services Planning Council on Jan. 19 at Harvard's School of Public Health. The evaluation project is supported by a contract between SOM's Public Management Department and the Boston Department of Health and Hospitals. Other participating Suffolk faculty include **Richard Beinecke**, **Marie Matava** and **David Pfeiffer**.

Charles Kindregan, Law Faculty. He moderated a Mass. Bar Association meeting on the probate and family court in January at the Copley Marriott. Panelists included Chief Probate Judge Mary Fitzpatrick, Gov. Weld's legal counsel Brackett Denniston III, State Rep. Robert DeLeo of Revere, Suffolk J.D. '76, and Judge David Sacks of Hampden Probate Court, Suffolk J.D. '74.

Celeste Kostopulos-Cooperman, Humanities and Modern Languages. Her translations of several Latin American women poets and her afterword to the text appear in *These Are Not Sweet Girls*, White Pine Press, New York, 1994. In addition, translation excerpts from Marjorie Agosin's *A Cross and a Star*, to be published by the University of New Mexico Press, appear in *Bridges*, Volume 4 Number 2, Winter '94 '95.

Susan Thayer, Learning Center. She is editor of the recently published "Self-Evaluation Guides: Models for Assessing Learning and Assistance/Developmental Education Programs."

Jack Demick, Psychology. He and Theresa Lavoie, a senior psychology major, will present "Young, Middle-aged and Older Adults Cognitive Representations of the City of Boston" at the Environmental Design Research Association annual conference in Boston March 2. And on March 31, Demick and Leo McNiff, a senior psych major, will present "Role of Identity Status and Parental Values in Late Adolescent Adjustment" at the Eastern Psychological Association annual meeting.

Marilyn "Midge" Wilcke, Media Services. She gave a presentation entitled "Walking Tour or Marketing Tool: The In-House Campus Video" at the North Atlantic District conference of CASE (Council for Advancement and Support of Education) held in Providence Jan. 29-31 with some 800 participants attending.



Margaret Collins Weitz, Humanities and Modern Languages. The professor was honored for 10 years devoted service organizing academic and cultural exchanges between sister cities Boston and Strasbourg. In mid-December, Weitz, vice president of the Boston/Strasbourg Sister City Association, was invited to that city by its mayor, Catherine Trautmann, who is also a delegate to the European Parliament and a former French deputy minister.

Saroj Sawhney of Economics has had a research paper "Family Structure and Economy: Perspectives from Neoclassical and Gandian Economics" for publication in *Social Engineer*, the journal for the Association of Social Engineering Research and Training in Patna, India.

Magid Mazen, Management. He conducted a four-day workshop in Cairo, Egypt on total quality management for 26 top Middle Eastern managers from nine countries. The workshop was followed by a public forum broadcast on Egyptian television. ❖

Dateline - Suffolk University

March						
S	M	T	W	TH	F	S
			1	2	3	4
5	6	7	8	9	10	11
12	13	14	15	16	17	18
19	20	21	22	23	24	25
26	27	28	29	30	31	

April						
S	M	T	W	TH	F	S
						1
2	3	4	5	6	7	8
9	10	11	12	13	14	15
16	17	18	19	20	21	22
23	24	25	26	27	28	29
30						

Calendar of Events

March

1- Last Day to Apply for May Graduation. Alumni Night at Celtics game Boston Garden.

3- Suffolk Palooza 1995 C. Walsh Theatre.

9- Council of Presidents Meeting 1 to 2 p.m. Sawyer 921. Alpha Phi Omega Meeting 1 to 2:25 p.m. Fenton 430. MPA Association Meeting 6:30 to 7:30 p.m. Sawyer 521.

12- Emmanuel Music Presents a Brahms Concert 4 p.m. C. Walsh Theatre.

13- Spring Vacation Begins and Runs Through March 18.

15- Graduate Admission Application Due for Students Seeking Financial Aid.

17- Evacuation Day Holiday- University Closed.

20- Pre-registration for Fall, 1995 begins Faculty advising for Fall, 1995 and for Summer Sessions. Mail Registration for Summer Sessions 1995. (CAPS) SOM Alumni Board of Directors Meeting 5:30 p.m. Vice President's Conference Room

23- Co-Op Job Fair 12 to 2 p.m. Sawyer Cafeteria. Council of Presidents Meeting 1 to 2:30 p.m. Sawyer 921. Alpha Phi Omega Meeting 1 to 2:30 p.m. Fenton 430. SOM Faculty Meeting 1 to 2:30 p.m. Sawyer 427, 429.

26- Undergraduate Information Session 12:30 p.m. Sawyer Cafeteria, 427, 429.

31- Graduate Students Financial Aid Applications Due.

April

6- Suffolk Student Theatre: *Fires in the Mirror* 8 p.m. C. Walsh Theatre. Council of Presidents Meeting 1 to 2:30 p.m. Sawyer 921. Alpha Phi Omega Meeting 1 to 2:25 p.m. Fenton 430.

7, 8- Suffolk Student Theatre: *Fires in the Mirror* 8 p.m. C. Walsh Theatre.

9- Collage New Music Series 4 p.m. C. Walsh Theatre.

11- Student Government Association Meeting 1 to 2:30 p.m. Sawyer 423. MPA Association Meeting 6:30 to 7:30 p.m. Sawyer 521.

17- Patriots Day Holiday- University Closed.

19- Wednesday Evening Classes Canceled, Monday Evening Classes Meet.

20- Council of Presidents Meeting 1 to 2:30 p.m. Sawyer 921. Alpha Phi Omega Meeting 1 to 2:25 p.m. Fenton 430. SOM Faculty Meeting 1 to 2:30 p.m. Sawyer 427, 429.

24- Last Day for Non-priority Fall Registration. MPA Association Meeting 6:30 to 7:30 p.m. Sawyer 521.

27, 28- Reading Days.

30- Emmanuel Music Presents a Brahms Concert 4 p.m. C. Walsh Theatre.

New Employees

Areniello, Antonietta of Medford- Cashier, Student Accounts.

Connelly, Carolyn of Melrose- Secretary, Development.

Creamer, Stephen J. of Revere- Associate Bursar- Student Accounts.

DeAguiar, Maria R. of Revere- Computer Assistant- Academic Computing.

DeStefano, Christopher J. of Somerville- Production Assistant. C. Walsh Theatre.

Diamond, James P. of Allston- Staff Assistant, UMS.

Flynn, John of Quincy. Manager- Law Library.

Jungling, Pamela M. of Weymouth- Assistant Director, Grad Admissions.

Lopez, Salvatore D. of Boston- Publications Manager, UMS.

McGrath, Alison J. of Arlington- Coordinator, Law Admissions.

McNiff, Gail M. of Nahant- Manager, Payroll.

Pariste, Dolores of Boston- coordinator, Health Services.

Prezioso, Paul A. of Hingham- Maintenance Mechanic, Physical Plant.

Voto, Catherine A. of East Boston- Operator, Switchboard.

Whitters, James P. of Boston- Director, Career Services (Law).

Wolff, Susan A. of Jamaica Plain- administrative coordinator, Enrollment and Retention Management.

Yu, Mary of Boston- Staff accountant, Vice President/Treasurer's Office.



Personnel

Harvard/Pilgrim Merger Won't Affect Coverage

As has been communicated to the University community, the Harvard Community Health Plan and Pilgrim Health Care are merging. Toni Tinberg of Human Resources says the consolidation should take about a year, but the plans will be operated as separate health plans.

"Our goal is to make the transition as smooth as possible for you and your employees," Tinberg reported. "We are firmly committed to not just maintaining, but continuously improving the quality, service and efficiency of both HCHP and Pilgrim during the integration process."

Tinberg stressed that members will not notice any immediate changes nor will the merger affect any aspect of the present coverage or the way they get care.

"Once our health plans have been fully combined in about a year, we will be able to offer even more choice and geographical coverage," she noted. She said it is hoped that a merger will be completed with New Hampshire's Matthew Thornton Health Plan which will include more than 16,000 of the region's finest physicians and more than 110 community and teaching hospitals.

Tinberg said members will still get their care from their personal physician in the setting that best meets their needs whether it is a multi-specialty health center, a physician group practice or an independent physician's office.

"The merged organization will maintain the best features HCHP and Pilgrim now offer and allow us to maximize quality, service and efficiency," she said.

Fitcorp Offers Reduced Rates

Fitcorp is once again offering Suffolk University employees the opportunity to utilize their health club facilities at a reduced cost.

The initiation fee for joining either a Boston or suburban center is \$50. The Boston annual fee when paid in full is \$675 while suburban clubs charge \$420. Human Resources' Toni Tinberg says it is possible to spread payments out over a monthly schedule at a slightly higher cost. Call Tinberg at 8415 for further information.

Staff Development Programs Set

Managing People in a Changing Workplace, a special program for department heads, associate directors, and assistant directors with supervisory responsibilities, will resume on March 24 with a session **Defining the New Workplace** and on April 12 **Managing in the New Workplace**. This is a series on structured discussions and activities on the most recent thinking and research about new management needs.

Dr. Alexandra Todd, chair of the Sociology Department, discussed alternative methods to cope with illness as considered in her new book, *Double Vision-an East West Collaboration*, in the Well-Being Series Feb. 28.

The Spring sessions will conclude with a special presentation on June 19 by Loretta LaRoche, M.D. (Mirth Doctor). She believes laughter is the most effective tool we have to overcome stress and the limitations it places upon us.

To participate in any of these programs, complete the form in the back of the booklet mailed to all administrative and support staff on Feb. 1 or send a memo to Human Resources.

Promotions, Tenure Approved by Board

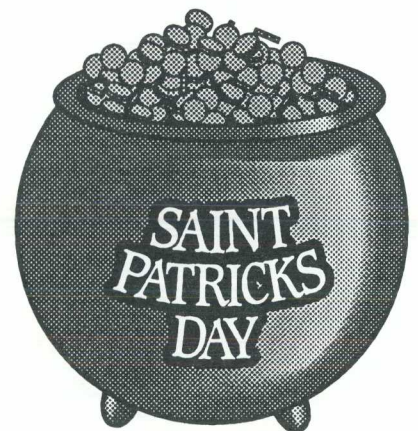
The Board of Trustees, at its February meeting, approved the following promotions in CLAS effective July 1: **James Hannon**, assistant professor of Sociology to associate professor; **Celeste Kostopulos-Cooperman**, assistant professor of Humanities and Modern Languages to associate professor; **Gerald Peary**, associate professor of Communication and Journalism, to professor; and **Dan Stefanescu**, associate professor of Math and Computer Science, to professor.



Kostopulos-Cooperman

Tenure was granted to **Leslie Croxford**, associate professor of Humanities and Modern Languages and **Irina Peterburgsky**, associate professor of Math and Computer Science.

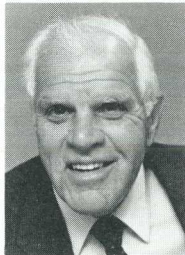
In the School of Management, **Ki C. Han**, assistant professor of finance, was promoted to associate professor. He was granted tenure along with **Denis Lee**, professor, CIS, and Associate Professor of Finance **Alexandros Prezas**. One-year sabbaticals were granted to **Murat Tarimcilar**, associate professor of Management, and **Magid Mazen**, associate professor of Management. ❖





Potpourri

by Lou Connelly



She came to Suffolk University as a teenager right out of Medford High School. That was 19 years ago and now, after a dedicated and productive career in Alumni/Development, **Susan Harrington** has accepted a position as director of alumni relations at Mass. College of Pharmacy.



Harrington

"Suffolk has been a home away from home for me," she confessed. "I literally grew up here spending half my life at the University, starting as a secretary under **Ellen Peterson**, then under **Ellen Foley**, later becoming assistant director of alumni affairs, manager of stewardship and associate director of development. But now it's time for a change and while I will miss Suffolk I look forward to this new challenge."

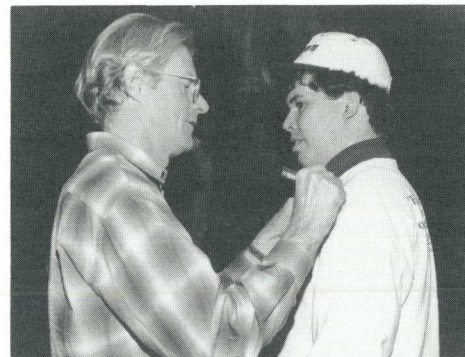
Susan will be working for **Arnie Bailey**, vice president for institutional relations at Mass. Pharmacy. Arnie worked here under former Vice President **Dave Murphy**. Mass. College of Pharmacy has a significant Suffolk presence. In addition to Bailey and Murphy, now a consultant there, other former Suffolkites on the Pharmacy staff include **Donna Ruseckas**, now athletic director, former S.U. assistant basketball coach **Kevin VanCisin**, now head hoop mentor there, and former assistant S.U. College Registrar **Joan Monahan**, currently Pharmacy College Admissions director.

A SUN beam on Sue Harrington for her long-time service to Suffolk and those long hours at the desk and best wishes in your new position.

Actor **Ed Begley Jr.**, who recently starred in the American premiere of *The Cryptogram* at the C. Walsh Theatre, deeply impressed a Suffolk class in directing and theater production with his lecture, the result of an invitation he accepted from **Prof. Marilyn Plotkins**. His motto, "Live simply so others can simply live," rang home to his audience as he cautioned them against extravagance. The star of the television show *St. Elsewhere* was deeply influenced by his father **Ed, Sr.**, remembered for the movie, *Twelve Angry Men*, and one of his idols was the legendary star **John Wayne**. Begley graciously posed for photos and signed autographs for the class...

It's been a long time since Presidential Assistant **Jackie Parker** has missed a Beanpot hockey game (hubby **Jack** is the long-time Boston University coach), and this year she made a sort of cameo television appearance when a puck whizzed into the stands not far from her, and color commentator **Mike Eruzione** acknowledged her appearance. This year's Beanpot title, the 10th in his coaching career, had a little more than usual for Coach Parker since it was the last Beanpot Tournament to be held in the old Boston Garden...

History's **Ken Greenberg** has released the Spring schedule for the 1995 Spring CLAS Seminar Series that he coordinates. The series enables faculty to share their research with the larger community. Upcoming are **Gail Coffler** of English presenting "Melville's Iconoclasm: Religion as Myth" March 9 at 1 p.m.; **Joe McCarthy** of Education and Human Services discussing "The Chariot of Fire: The Achievement of Pierre Teilhard de Chardin" March 28 at 1 p.m.; **Avi Soifer**, dean of Boston College Law School, discussing "The Sovereign Prerogative of Memory" March 28 at 1 p.m. and **Maria Miliora** of Chemistry presenting "Psychological Analysis of George Lincoln Rockwell, the Founder of the American Nazi Party." The lec-



Ed Begley Jr. signs autograph for Suffolk junior **Dan Coakley** of South Boston during appearance here.

tures will be in the Muncie Conference Room except for Soifer's which will be held in Sawyer 427-429...

Dave Tuerck of Economics and the Beacon Hill Institute is being sought for local TV and Radio Shows. He's appeared recently with **Ted O'Brien** on Channel 68's *Consider This* and with reporter **Kirby Perkins** on Channel 5 news, and also was a guest on **Jerry Williams** morning show on WRKO and on 68's *Adler on Line*. And Law **Prof. Michael Rustad** appeared on the *Clapgood and Whitley* show on WRKO to discuss tort reform proposals in the Contract with America...

Speaking of talk radio, **Jim Hannon** of Sociology is hosting a new radio program on WADN in Concord. The program, called *The Public Interest*, airs Mondays from 10 to 11 a.m. and covers contemporary issues in an interview and call-in format...

Dean of Students **Nancy Stoll** recently served as a member of a national symposium for women aspiring to be chief student affairs officers. The program was sponsored by the National Association of Student Personnel Administrators. Stoll was also a guest panelist at Harvard Graduate School of Education's career series on higher education administration...

Fran Amatucci of Management is coordinating a U.S.-Khazakhstan cooperative brought about through the Cen-

Potpourri

(cont. from pg. 7)

ter for International Education. Kazakhs will be instructed in U.S. business theory and practices. SOM faculty taking part are **Laurie Pant**, **Gail Sergenian** and **Steve Tomcyk** of Accounting; **Mark Blodgett** and **David Silverstein** of Business Law; **Tom O'Hara** and **Shariar Khaksari** of Finance; **Ruth Clarke**, **Pierre DuJardian**, **Colleen Jones** and **Magid Mazen**; of Management and **Nizam Aydin** of Marketing...

His many friends on campus will be happy to learn that former Assistant SOM **Dean Ron Sundberg** is the new dean of continuing education at Elmira College in Elmira, N.Y...

One happy mother in the Ballotti Learning Center is **Rose Wright**. Her son, **David A. Bright**, a '94 Suffolk University grad, has been accepted to Harvard Law School next Fall...

John Berg of Government will be a panelist at the American Political Science Association convention in Chicago in June. He will be discussing "Victor and Vito: Models of Socialists in Congress." The collection of historic mementoes Retired Associate Law Librarian **Pat Brown** donated to the Athletic Department is now on display in a trophy case on the mezzanine level in the Ridgeway Building...

Best wishes to departing **Lisa Modecker** of Athletics who will be staying home in Roslindale with infant daughter **Wynona**. She's been succeeded by **Carol Maggio**, moving from secretary with the Law faculty...

Members of the Master in Public Administration, under guidance by **Prof. Fran Burke** nearly doubled the number of sweaters donated to the Church of the Advent on Beacon Hill for the homeless this winter- 21 to be exact...

Economics professors **Sanjiv Jaggia** and **In-Mee Baek** have had efforts accepted for publication, Jaggia in the *Journal of Business and Economic Statistics* and Baek for a paper "The Determinants of the Duration of Commercial Bank Debt Renegotiation for Sovereigns" in the *Journal of Banking and Finance*...

On these frigid February days, English's **Bob Johnson** and wife, **Pat**, more than once think back of the 15-day tour they took of Italy last Summer...

Student Activities, Health Services and Human Resources are teaming up to sponsor the first annual Wellness Fair March 30 from 11 a.m. to 3 p.m. Various vendors from the health and wellness field will be on hand. Testing will include dental and back screenings, blood pressure and vision exams and more. Call Student Activities at x8320 for more details...

Maria Mancini, a third-year day student from Needham Heights, is the grand prize winner of the Law School Library's contest to celebrate the University Libraries Online Public Access Catalog - called ARCHER after our founder **Gleason L. Archer**. It enables students to search for books by author, title, subject and keyword and it contains the holdings of both Law School and Sawyer libraries. Mancini was among a group of



Mancini

students answering five questions by using ARCHER. Several answered all five correctly and on Feb. 1 Mancini's name was randomly drawn from the pool. She won a \$50 gift certificate to the Suffolk Bookstore...

The Physics and Engineering Department will toast retired **Prof. Ted Marshall** at a dinner at Pier 4 on March 4 beginning at 7 p.m. The dinner is open to all of the University community with tickets \$25 per person. Marshall, who will continue to teach part-time, has been a member of the Physics faculty for 27 years. He came to the University from Rhode Island College and helped develop the department and expand it during his years as chair, developing a curriculum for a major and instituting courses in astronomy and celestial and coastal navigation. For tickets call **Cheryl Sheafer** at 573- 8230...

Christine Poirier and **Beth Ross** of the College Registrar's Office are heading south for a vacation, Christine to Orlando and Disneyworld and Beth to the Mardi Gras in New Orleans. And in that same office, wedding bells will be ringing for **Kelley Armao** of Billerica who will wed **Don DeLuca** Oct. 28...

Reminder from **Gail Mansfield** of Development: The Winter/Spring phonathon began February 27 and will continue through April 13. Volunteers are welcome and needed. The calls will be Monday through Thursday from 6 to 8:45 p.m. with dinner served at 5:30 p.m. The location: The Vice President's Conference Room, One Beacon St., Call Gail at 573-8451 for further details...

Finally, is there a law school around that can top this? **Sara Tolosa** of Arlington gave birth to triplets (girls) last fall, but it hasn't stopped her from continuing her day classes at Suffolk Law School and she'll receive her juris doctor degree in May. And if you think that's something, **Brian Burke** of Worcester, a third-year evening student in the Law School, and his wife, **Carolyn**, became parents of quadruplets (two boys, two girls) in October. Quintuplets anyone? Keep warm, we'll see you in Fort Myers, replacement players or not... ❖